

# Compact Sheet-steel Emergency Light Fitting Series 6118



www.stahl.de



- > Electronic ballast with integrated emergency light unit for continuous operation
- > Tests
  - With weekly functional test
  - With automatic emergency light duration test
- > With discharge protection and charging voltage limitation
- > For fluorescent lamps 8 W
- > Central locking
- > Enclosure in powder-coated sheet steel or stainless steel

E2



11199E00

Series 6118 compact emergency light fittings in sheet steel can be used for safety lighting as well as illuminated signs or safety lights. The light fittings are preferably used in spraying and painting installations as well as in clean rooms.

	ATEX					
Zone	0	1	2	20	21	22
For use in		x	x			

**WebCode 6118A**

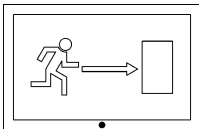



# Compact Sheet-steel Emergency Light Fitting

## Series 6118

### Selection Table

Version	Version	Lamps W	Battery	Lighting hours	Order number	Weight kg
Series 6118	Pendant light fitting	1 x 8 W	2.5 Ah / 6 V	1.5 h / 3 h	6118/5081-80.7-72.0-...	7.330
	Wall-mounting light fitting	1 x 8 W	2.5 Ah / 6 V	1.5 h / 3 h	6118/6081-80.7-72.0-...	7.730
	Recessed light fitting	1 x 8 W	2.5 Ah / 6 V	1.5 h / 3 h	6118/7081-80.7-72.0-...	7.790

### Order Number Supplement

Cable entries	Standard: 1 x cable gland M25 x 1,5 1 x plug M25 x 1,5				6.18 / .....1.....	
	Special: Specify non-standard entries in writing				6.18 / .....9.....	
Number of terminals	with 4 terminals				6.18 / .....4.....	
	with 6 terminals				6.18 / .....6.....	
Emergency exit signs	Needed only when used as information lights or escape sign lights; with adhesive symbols positioned as follows: Mounting position Standard					
						
	A 09035E00					
	Special Please state other positions in writing Please specify emergency exit sign number Symbols complying with VBG 125, DIN 4844, DIN 5035; recognition distance e: 45 m; size: 395 x 235 mm					
	Illustration Description	Colour	Sign Background			
	white	green		6.18 / .....-17		
08482E00						
	white	green		6.18 / .....-19		
08482E00						
	white	green		6.18 / .....-30		
08484E00						
<b>Note</b> The light fittings are supplied without lamps and mounting material. These must be ordered separately. Further escape and information signs available on request. Wall-mounting brackets must be ordered separately.						

### Explosion Protection

#### Europe (ATEX)

Gas

PTB 99 ATEX 2201  
II 2 G EEx edm IIC T4

#### Certifications and certificates

Certificates

ATEX, Belarus (operating authorisation)

Marking (CE)

CE 0158

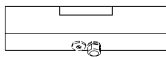
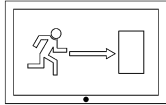
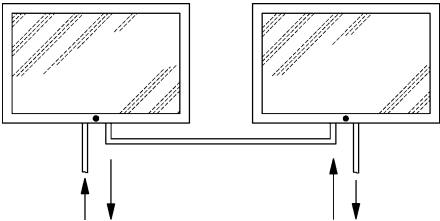
# Compact Sheet-steel Emergency Light Fitting

## Series 6118



E2

### Technical Data





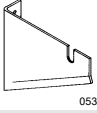

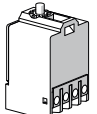
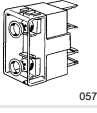
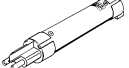
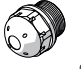
<b>Electrical data</b>	
Nominal operational current	0,15 A
Rated voltage	AC: 220 ... 254 V, 50 / 60 Hz
Ballast	Electronic ballast, single channel with integral emergency light electronics
Disconnection of the light	Of light fitting on opening Central locking device with safety interlock; switch 8080 with NC contacts with positive opening operation; on opening central lock, voltage to ballast, charging phase and battery set is disconnected Of faulty lamp if lamp is faulty, power supply is automatically switched off by the electronic ballast
<b>Luminous Characteristics</b>	
Lamps	1 x 8 W; Two pin fluorescent lamps, 8 W, 16 mm diameter, for G5 holder
Measures for light guidance	Reflector, painted white
<b>Ambient conditions</b>	
Ambient temperature	
Charging	- 5 ... + 50 °C
Normal mode	- 20 ... + 50 °C
<b>Mechanical data</b>	
Material	
Enclosure	Standard: Sheet-steel, powder coated, colour similar to RAL 9016 Special: Stainless steel
Lens	Safety glass
Gasket	EPDM formed gasket
Protection class	I (with internal PE connection terminal)
Degree of protection	IP65
Lamp locking	central locking using screw driver; glass cover hinged for access
<b>Mounting / installation</b>	
Connection	Terminal block (Line-up terminals) marking L, N, PE, L <sup>1</sup> (L = charging phase) charging phase must be connected at all time Terminal size 2 x 4 mm <sup>2</sup> , for solid cores 2 x 2.5 mm <sup>2</sup> , for flexible cores
Cable entry	Standard: 1 cable gland 8161 in plastic M25 x 1,5 and 1 plugs 8290 in plastic, M25 x 1,5
	  <small>09036E00</small>
	Special: other cable entries in plastic or metal on request
Installation notes	
Assembly	<p><b>Pendant light fitting</b> Light fitting top has two M 8 threaded rivets which allow use of different mounting parts, e. g. ring bolts.</p> <p><b>Wall-mounting light fitting</b> Each small end is fitted with one M12 threaded bolt. The light fitting is hooked-in by these bolts to the mounting brackets and secured by lock nuts. The light fitting's angle of inclination is infinitely variable.</p> <p><b>Recessed light fitting</b> Mounting frames with fixing holes are welded-on. Light fitting is inserted into ceiling cutout and fixed via mounting frame. The frames are flush with the glass cover.</p>
Looping through of cables	There are 2 free terminals assembled in the light fitting for looping through of cables
	 <small>09037E00</small>



# Compact Sheet-steel Emergency Light Fitting Series 6118



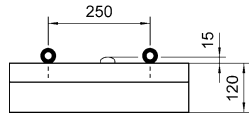
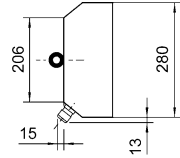
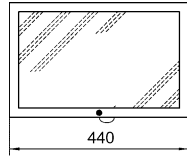
## Accessories and Spare Parts

Designation	Figure	Description	Art. no.	Weight kg
Fluorescent lamps	 04936E00	Colour of light cool white Light flux 450 lm 10 pcs	<b>119045</b>	0.415
Emergency exit sign		Adhesive foil, to stick on the glass cover Size: 395 x 235 mm Recognition distance: e = 45 m		0.000
	 08483E00	Colours Sign white Background green 1 pc.	<b>113312</b>	0.027
	 08482E00	Colours Sign white Background green 1 pc.	<b>113310</b>	0.027
	 08484E00	Colours Sign white Background green 1 pc.	<b>113327</b>	0.015
Wall-mounting bracket	 05375E00	Material: Sheet steel For light fittings width: 280 mm 1 pair	<b>108948</b>	1.000
Ring bolts	 05378E00	M8, direct mounting in insert nuts, 1 pair	<b>115736</b>	0.120
Switch	 10809E00	Switching element 8080/1-3-L, 2 normally closed contacts	<b>132527</b>	0.025
Fuse	 05736E00	to protect battery circuit 4 A 1 pc	<b>149113</b>	0.035
Battery set	 05702E00	NiCd-battery 2.5 Ah / 6 V 1 pc	<b>171256</b>	0.480
Breathing gland	 05703E00	M25 x 1.5 in order to avoid condensate formation	<b>115738</b>	0.020

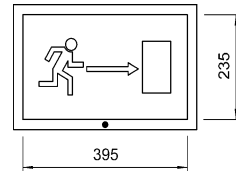
E2

# Compact Sheet-steel Emergency Light Fitting Series 6118

**Dimensional Drawings** (All Dimensions in mm) - Subject to Alterations



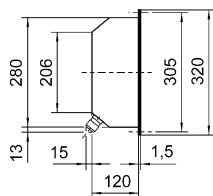
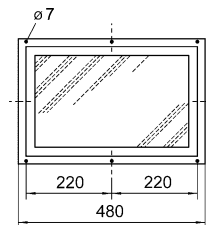
04722e00



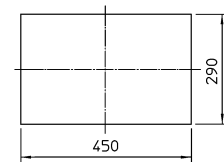
09038e00

Pendant light fitting

Emergency exit sign



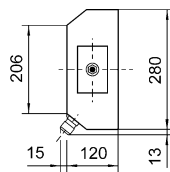
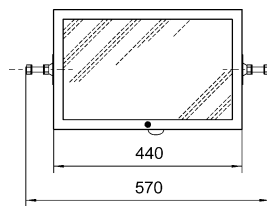
04724e00



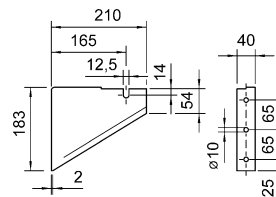
09675E00

Flush-mounting light fitting

Mounting cut out



04723e00



04601e00

Wall-mounting light fitting

Wall-mounting bracket

## Compact sheet-steel emergency light fitting 6118

We reserve the right to make alterations to the technical data, dimensions, weights, designs and products available without notice. The illustrations cannot be considered binding.

# Compact Sheet-steel Emergency Light Fitting

## Series 6118



E2