

10017E00

Tubular Light Fittings for Fluorescent Lamps Series T-LUX 6030 Zone 1 and Series T-LUX 6430 Zone 2

- Wide beam
- Pendant, wall mounting or bulkhead fitting options
- With electronic ballast
- For two-pin fluorescent lamps
- 1- or 2-lamp version
 - 18 W / 20 W
 - 36 W / 40 W
- Central lock
- Positive opening contact
ensure all poles are
disconnected when light fitting
is opened
(Only Zone 1-version)
- Polyester resin housing,
polycarbonate tube
- Degree of protection IP 68

The light series T-LUX 6030 and T-LUX 6430 fittings are ideal for use on ships, in sewage and treatment plants, pumping stations water collecting tanks and inspection pits. They can be used for normal lighting as well as for group or centrally supplied emergency lights.

Zone 1 and Zone 2

Tubular Light Fittings for Fluorescent Lamps Series T-LUX 6030 Zone 1 and Series T-LUX 6430 Zone 2

Selection table					
Version	Lamps	Connection	Nennspannung	Ordering code	Weight kg
6030 Tubular Light Fittings for use in Zone 1 and Zone 2	1 x 18 W / 20 W	1-channel- electronic ballast	220 V ...240 V 50 / 60 Hz	6030/521-80.1	4,9
	2 x 18 W / 20 W	2-channel- electronic ballast		6030/522-90.1	5,4
	1 x 36 W / 40 W	1-channel- electronic ballast		6030/541-80.1	6,6
	2 x 36 W / 40 W	2-channel- electronic ballast		6030/542-90.1	7,3
6430 Tubular Light Fittings for use in Zone 2	1 x 18 W / 20 W	1-channel- electronic ballast	220 V ...240 V 50 / 60 Hz	6430/521-80.0	3,9
	2 x 18 W / 20 W	2-channel-electro- nic ballast		6430/522-90.0	4,4
	1 x 36 W / 40 W	1-channel- electronic ballast		6430/541-80.0	5,6
	2 x 36 W / 40 W	2-channel- electronic ballast		6430/542-90.0	6,3
Add. to ordering code					
	Cable entries	Standard: 1 x M 25 x 1.5		6030/ 1.	
		Special: specify on order		6030/ 9.	
	Rated voltage and frequency: specify on order				
Note	The light fittings are supplied without lamps and mounting accessories. These parts must be ordered separately				

Technical Data					
Version	6030 for Zone 1		6430 for Zones 2 and 22		
Explosion protection					
Gas explosion protection	⊕ II 2 G / EEx ed IIC T4 (Option: T6 for 18 W Ø 38 version)		⊕ II 3 G / EEx nA T4 (Option: T6 for 18 W Ø 38 version)		
Dust explosion protection			⊕ II 3 D IP68 T135 °C		
Certificates	PTB 00 ATEX 2072		--		
Marking	CE 0102				
Lamps	1 x 18 W ; 2 x 18 W; 1 x 36 W; 2 x 36 W Two-pin fluorescent lamps Ø 38 mm or Ø 26 mm, socket G13				
Rated Voltage	AC: 220 V - 10 % ... 240 V + 10 % 50 Hz / 60 Hz DC: 198 V ... 254 V				
Rated current	at 230 V / 50 Hz				
	1 x 18 W / 20 W	2 x 18 W / 20 W	1 x 36 W / 40 W	2 x 36 W / 40 W	
	0.1 A	0.17 A	0.17 A	0.32 A	
Power factor cos φ	cos φ = 0.96 capacitive, no additional compensation required				
Ambient temperature	- 20 °C ... + 55 °C (+ 40 °C: 18 W → T6)				
Material					
Housing	Polyester resin, glass fibre reinforced, colour white, similar RAL 9010				
Tube	Polycarbonate; protective paint optional				
Gaskets	Polyurethane-gasket foamed into lid Neoprene-Gaskets in the end caps				
Protection class	I (with internal PE connection terminal)				
Degree of protection	IP 68 (2 m, 30 min)				
Cover fixing	central locking by socket spanner M 8 / SW 13; end cap hinged for opening				

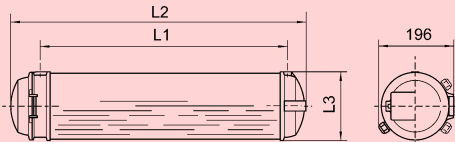


Tubular Light Fittings for Fluorescent Lamps Series T-LUX 6030 Zone 1 and Series T-LUX 6430 Zone 2

Technical Data		
Version	6030 for Zone 1	6430 for Zones 2 and 22
Disconnection		
When light fitting opened	Switch has safety interlock; when central lock is opened, voltage to ballast is disconnected on both poles; switching element contacts are positively opened	no switch-off
Faulty lamp	If lamp is faulty the electronic ballast automatically disconnects its power supply	
Light guides	Standard: wide beam, tube sides anti-glare	
Flexible lead	Terminal block with spring contacts; with through-wiring option Marking L1 + N + PE; cable cross-section max. 2 x 2,5 mm ² , solid / flexible	
Cable entry		
Standard	1 metal cable gland M 25 x 1.5 + 1 metal stopping plug M 25 x 1.5	1 metal cable gland M 25 x 1.5
Special	up to 5 metal gland M 25 x 1.5 metal cable gland earthing via metal adapter plates	1 metal stopping plug M 25 x 1.5 1 metal gland M 25 x 1.5 metal cable gland earthing via metal adapter plates
Installation notes		
Looping through of cables	Two M 25 x 1.5 compression gland can be supplied on the connection side, for cable through-looping	
Mounting		
Standard	3 x M 8 inserts in the end caps	
Special	Options are: wall mounting bracket, pipe clamps or ring bolts.	
	Note on Mounting When installing the light fittings care must be taken to ensure that the distance between the opening side of the fitting and the wall, the next light fitting or other obstacles is at least one fitting length. This is because the reflector plate must be pulled right out of the fitting when lamps are changed.	



Dimension drawings (all dimensions in mm) - subject to alterations

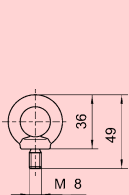


Light fitting	L1	L2	L3
18 W	650	790	184
36 W	1260	1400	184

04714E00

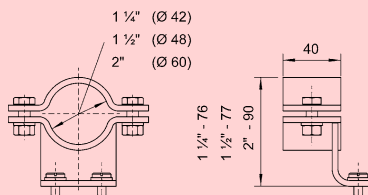
T-LUX 6030 / T-LUX 6430 Standard light fitting

Mounting accessories



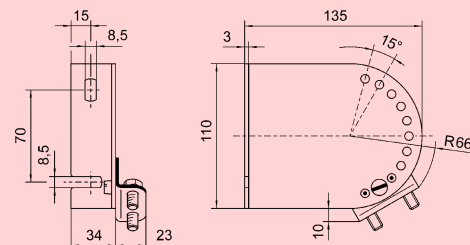
Ring bolt

04715E00



Pipe clamps

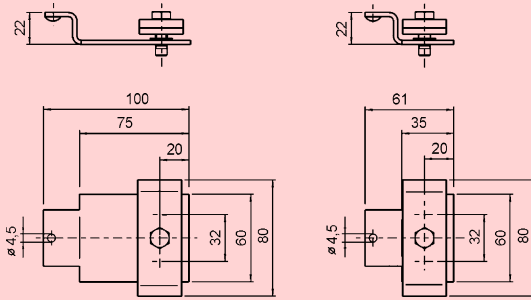
09346E00



Wall mounting bracket

04716E00

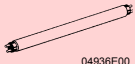
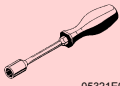
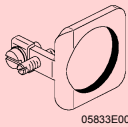

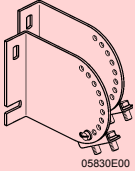
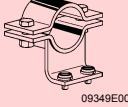
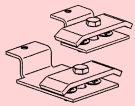
Dimension drawings (all dimensions in mm) - subject to alterations



04822E00

Mounting set „Grid cable rack“

Accessories and spare parts

Designation	Illustration	Description	Ordering code	Weight kg
Fluorescent lamps	 04936E00	two pin \varnothing 26 mm, light colour: Universal-white		
		18 W 1100 lm	4617220	0,100
		36 W 2600 lm	4617210	0,200
Socket spanner	 05321E00	M 8 / SW 13; to operate central locking	8198005400	0,126
Adapter plate	 05833E00	for use when incorporating glands into earthing system		
		1 x M 20 x 1.5	6030801550	0,018
		1 x M 25 x 1.5	6030802550	0,018
		1 x NPT 1/2"	6030803550	0,018
Ring bolts	 05378E00	1 x NPT 3/4"	6030804550	0,018
		M 8, to mount directly into inserts, 1 pair	6000803900	0,100
Mounting bracket	 05830E00	to wall or ceiling mount light fitting; Material: stainless steel		
		1 pair	6030801260	0,900
Pipe clamp	 09349E00	screw into inserts Material: stainless steel		
		R 1 1/4" 1 pair	6030805260	1,100
		R 1 1/2" 1 pair	6030802260	1,100
Mounting set "Grid cable rack"	 04361E00	R 2" 1 pair	6030803260	1,100
		for grid routes wire diameter 6 mm Material: stainless steel		
		1 pair	6030804260	0,500

We reserve the right to make alterations to the technical data, weights, dimensions, designs and products available without notice. The illustrations cannot be considered binding.

