



01776E00

### EEx d Enclosure in Moulded Plastic Flameproof Encapsulation Series 8218

- Explosions protection to
  - CENELEC
  - IEC
- Can be used in Zone 1 and Zone 2
- Moulded plastic flameproof enclosures (Polyester resin)
- 5 different enclosure lengths
- Front plate versions:
  - Square, in moulded plastic: totally enclosed, with spindle, inspection window
  - Round, in moulded plastic: totally enclosed, with spindle, inspection window
  - Round, in metal: with spindle, bearing-supported shafts

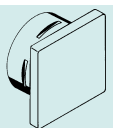
STAHL

Switching, control, regulation, measuring and display devices can be built into series 8218 flameproof enclosures.

The enclosures are available with different front plate versions for all standard applications. These can be, for instance, inspection windows for indicating instruments, spindles for potentiometers or keypads, bearing-supported shafts for incremental shaft encoders or motors.


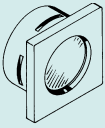





The incoming and outgoing leads are connected very easily via the clearly laid out stepped terminal block in the connection chamber.

#### Selection table

Version	Length of enclosure mm	8218/3: EEx de IIC T6 (only size 1; length 160 mm) <b>Ordering code</b>	8218/2: EEx de IIB T6 (all sizes) <b>Ordering code</b>	Weight kg
 Square front plate, plain	160 mm	<b>8218/311-1-004</b>	<b>8218/211-1-004</b>	1,080
	210 mm		<b>8218/212-1-004</b>	1,230
	260 mm		<b>8218/213-1-004</b>	1,380
	310 mm		<b>8218/214-1-004</b>	1,530
	360 mm		<b>8218/215-1-004</b>	1,680

# Zones 1 & 2

**Selection table**

Version	Length of enclosure mm	8218/3: EEx de IIC T6 (only size 1; length 160 mm) <b>Ordering code</b>	8218/2: EEx de IIB T6 (all sizes) <b>Ordering code</b>	Weight kg
 05577E00 Square front plate with spindle	160 mm	<b>8218/311-1-014</b>	<b>8218/211-1-014</b>	1,230
	210 mm		<b>8218/212-1-014</b>	1,380
	260 mm		<b>8218/213-1-014</b>	1,530
	310 mm		<b>8218/214-1-014</b>	1,680
	360 mm		<b>8218/215-1-014</b>	1,830
 05284E00 Square front plate with inspection window $\varnothing$ 52 mm	160 mm	<b>8218/311-1-104</b>	<b>8218/211-1-104</b>	1,130
	210 mm		<b>8218/212-1-104</b>	1,280
	260 mm		<b>8218/213-1-104</b>	1,430
	310 mm		<b>8218/214-1-104</b>	1,580
	360 mm		<b>8218/215-1-104</b>	1,730
 05587E00 Round flange, plain	160 mm	<b>8218/311-1-304</b>	<b>8218/211-1-304</b>	1,100
	210 mm		<b>8218/212-1-304</b>	1,250
	260 mm		<b>8218/213-1-304</b>	1,400
	310 mm		<b>8218/214-1-304</b>	1,550
	360 mm		<b>8218/215-1-304</b>	1,700
 05287E00 Round flange, plain with spindle	160 mm	<b>8218/311-1-314</b>	<b>8218/211-1-314</b>	1,230
	210 mm		<b>8218/212-1-314</b>	1,380
	260 mm		<b>8218/213-1-314</b>	1,530
	310 mm		<b>8218/214-1-314</b>	1,680
	360 mm		<b>8218/215-1-314</b>	1,830
 05288E00 Round flange with inspection window $\varnothing$ 52 mm	160 mm	<b>8218/311-1-404</b>	<b>8218/211-1-404</b>	1,130
	210 mm		<b>8218/212-1-404</b>	1,280
	260 mm		<b>8218/213-1-404</b>	1,430
	310 mm		<b>8218/214-1-404</b>	1,580
	360 mm		<b>8218/215-1-404</b>	1,730
 05290E00 Round metal flange with spindle	160 mm	<b>8218/311-1-724</b>	<b>8218/211-1-724</b>	1,330
	210 mm		<b>8218/212-1-724</b>	1,480
	260 mm		<b>8218/213-1-724</b>	1,630
	310 mm		<b>8218/214-1-724</b>	1,780
	360 mm		<b>8218/215-1-724</b>	1,930
 05291E00 Round metal flange with bearing-suppor- ted shaft	160 mm	<b>8218/311-1-734</b>	<b>8218/211-1-734</b>	1,330
	210 mm		<b>8218/212-1-734</b>	1,480
	260 mm		<b>8218/213-1-734</b>	1,630
	310 mm		<b>8218/214-1-734</b>	1,780
	360 mm		<b>8218/215-1-734</b>	1,930

**Note**

Cable gland

Standard: 1 x M 20 x 1,5 cable gland series 8161

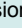
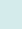
 Special: max. 3 x M 20 x 1,5 cable glands series 8161  
or  
2 x M 20 x 1,5 metal cable glands available

Please specify on order

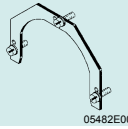
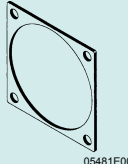

Enclosures in IIC version are only available in the 160 mm length.



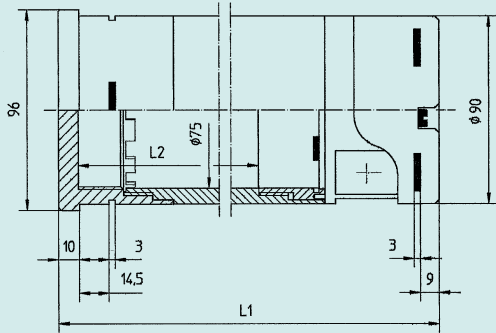
## Technical Data

Explosion protection	8218/3:  II 2 G EEx ed IIC T6 (only size 1; length 160 mm) 8218/2:  II 2 G EEx ed IIB T6 (all sizes)			
Certificates	Empty enclosure	8218/3..-1-...:	PTB 02 ATEX 1104 U	
		8218/2..-1-...:	PTB 02 ATEX 1106 U	
Certificates	Enclosure with internals	8218/3..-5-...:	PTB 02 ATEX 1105	
		8218/2..-5-...:	PTB 02 ATEX 1107	
Other certificates	BKI (Hungary)			
Rated voltage	750 V			
Rated current	16 A			
max. power dissipation	Type of enclosure	max. power dissipation	Temperature class	Volume available for fittings
	8218/311-...:	10 W	T6	310 cm <sup>3</sup>
	8218/211-...:	10 W	T6	310 cm <sup>3</sup>
	8218/212-...:	16 W	T6	530 cm <sup>3</sup>
	8218/213-...:	22 W	T6	750 cm <sup>3</sup>
	8218/214-...:	26 W	T6	970 cm <sup>3</sup>
	8218/215-...:	31 W	T6	1190 cm <sup>3</sup>
Degree of Protection	IP 65			
Material				
Housing	Polyester resin, glass fibre reinforced, dark grey RAL 7024, impact strength $\geq 7$ Nm, surface resistance $\leq 10^9$ Ohm, material self-extinguishing and flame resistant			
Inspection window	Borosilicate glass or quartz glass			
Gasket	Nitrilbutadiene rubber			
Mounting	Panel mounting, mounting on mounting plate or flange mounting			
Cable entry				
Standard	1 x M 20 x 1,5 cable gland series 8161			
Special	max. 3 x M 20 x 1,5 cable gland series 8161 or bell-mouthed glands series 8165 or 2 x M 20 metal glands			
Barrier bushing	Conductor bushing 10 x 0,75 mm <sup>2</sup> (others on request)			
Flexible lead	Terminal block with 10 terminals (including 1 terminal for PE-connection) Conductor size: flexible 2,5 mm <sup>2</sup> / solid 2,5 mm <sup>2</sup>			

## Accessories and spare parts

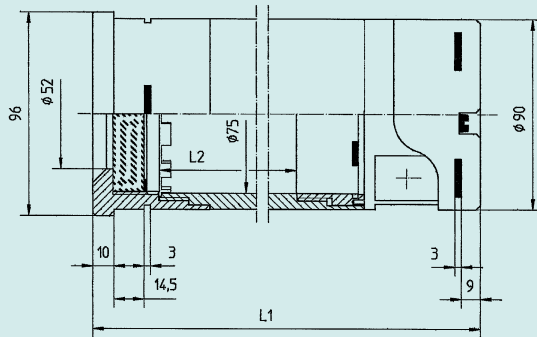
Designation	Illustration	Description	Ordering code	Weight kg
Mounting bracket	 05482E00	for clamping enclosure in the panel cut-out or fixing to mounting plate; complete with screws M 5 x 16	<b>8218801180</b>	0,063
Gasket	 05481E00	for panel mounting	<b>8218901950</b>	0,010
Brass plate	 05483E00	for fitting of metal cable glands M 20 x 1,5	<b>8218901550</b>	0,090

Dimension drawings (all dimensions in mm) - subject to alterations



04017E00

Enclosures 8218  
front plate plain

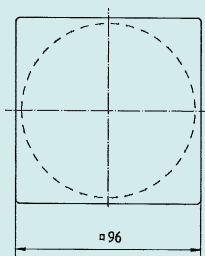


04018E00

Enclosures 8218  
with inspection window

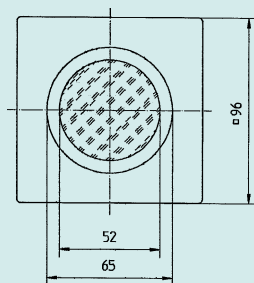
Enclosures	Length of enclosure L1	Clear installation length L1
8218/311	160 mm	ca. 60 mm
8218/211	160 mm	ca. 60 mm
8218/212	210 mm	ca. 110 mm
8218/213	260 mm	ca. 160 mm
8218/214	310 mm	ca. 210 mm
8218/215	360 mm	ca. 260 mm

Enclosures	Length of enclosure L1	Clear installation length L1
8218/311	160 mm	ca. 40 mm
8218/211	160 mm	ca. 40 mm
8218/212	210 mm	ca. 90 mm
8218/213	260 mm	ca. 140 mm
8218/214	310 mm	ca. 190 mm
8218/215	360 mm	ca. 240 mm



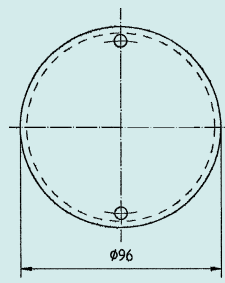
04012E00

Square front plate, plain



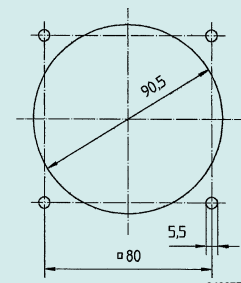
04007E00

Square front plate  
with inspection window



04009E00

Round flange, plain



04037E00

Panel cut-out

Enclosures series 8218

We reserve the right to make alterations to the technical data, weights, dimensions, designs and products available without notice. The illustrations cannot be considered binding.

STAHL