

## Fire alarm stations Series 8146/5052



- > Fire alarm stations with emergency hammer
- > Three versions are available
  - with break glass mushroom stay-put button
  - with break glass mushroom stay-put button with key lock
  - with break glass mushroom pushbutton
- > Enclosure made of glass fibre reinforced polyester resin
- > Colour red (RAL 3000)

www.stahl.de



00944E00



E5

The fire alarm station Series 8146/5052 is used for manual alarm triggering in hazardous areas. The enclosure is made of robust glass fibre reinforced polyester. The emergency hammer positioned at the side can be used to break the glass pane quickly in case of emergency and trigger the alarm. In total, three versions are available.

With mushroom stay-put button: To trigger alarm, break the glass pane and press the button. To disable alarm, turn the button.

With mushroom stay-put button with key lock: To trigger alarm, break the glass pane and press the button. To disable alarm, turn the key.

With mushroom button: Automatic alarm triggering by means of the preloaded mushroom button after breaking the glass pane. The subsequent installation of a resistor module Series 8208 allows short-circuit protection and open-circuit monitoring for this model.

		ATEX / IECEx							Class I (NEC 505) (NEC 506)						Class I		Class II		Class III		
Zone		0	1	2	20	21	22	Zone	0	1	2	20	21	22	Division	1	2	1	2	1	2
For use in		x	x			x	x	For use in		x	x				For use in	x		x	x	x	x

WebCode 8146G

# Fire alarm stations

## Series 8146/5052



### Selection table

Version	Schematic	Description	Order number	Art. no.	Weight kg
Break glass mushroom stay-put button		press to activate, turn to reset	8146/5052-C796	136126	2.270
Break glass mushroom stay-put button with key lock		press to activate, turn the key to reset	8146/5052-C797	136128	2.270
Break glass mushroom pushbutton		activates the alarm automatically after the glass pane has been broken	8146/5052-C814	136137	2.270

### Explosion protection

#### Global (IECEX)

Gas and dust

IECEX PTB 06.0025  
Ex d e ia/ib [ia/ib] m II, IIA, IIB, IIC, T6, T5, T4  
Ex tD A21 IP65 T80°C, T95°C

#### Europe (ATEX)

Gas and dust

PTB 01 ATEX 1024  
⊕ II 2 G Ex d e IIC T6  
⊕ II 2 D Ex tD IP65 T80°C

### Certificates and approvals

Certificates

Brazil (UL do Brasil), China (CQST Ex), Canada (CSA), Kazakhstan (GOST-K), Russia (GOST-R), Ukraine (TR), USA (UL), Belarus (GOST-B)

### Technical data

#### Device version

Version

according to DIN 14678 (non-automatic alarm station K)

#### Electrical data

Rated operational voltage

max. 500 V

Rated operational power

AC-15: max. 400 V, max. 6 A, max. 1000 VA  
DC-13: max. 110 V, max. 6 A, max. 110 W

according to utilization category

Switching capacity

see technical data of the contact element 8082/3

Contacts

1 NC + 1 NO

#### Ambient conditions

Ambient temperature

-50 ... +60 °C

#### Mechanical data

Degree of protection

IP66 according to IEC/EN 60529

Material

Enclosure

Glass fibre reinforced polyester resin, red (RAL 3000)

Cover lock

captive triangle head bolts made of stainless steel, thread M6, wrench M4

Connection type

2.5 mm<sup>2</sup> finely stranded

#### Mounting / installation

Cable glands

1 x M25 x 1.5

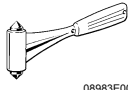



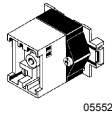

Clamping range

7 ... 17 mm

Resistor module

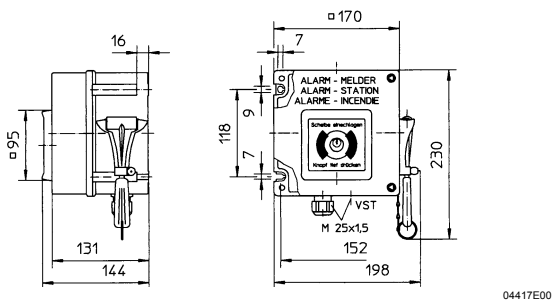
Complete retrofit kit in the control unit 8208 with integrated resistors for open-circuit monitoring and short-circuit protection. Resistance values according to order (adaptation to the signalling system)

**Accessories and spare parts**

Designation	Figure	Description	Art. no.	Weight kg
Emergency hammer	 08983E00	for breaking the glass pane in case of emergency	<b>163079</b>	0.070
Glass pane	 05551E00	for 8146/5052-C...	<b>155971</b>	0.034
Key	 05551E00	standard locking MS1	<b>107109</b>	0.008
Adhesive label	 05124E00	text "Fire service" according to DIN 14678	<b>137569</b>	0.001
Resistor module	 05552E00	Retrofit kit in the control unit 8208 equipped with 2 resistors according to customer request; e.g. 3.3 kΩ open-circuit monitoring 4.7 kΩ short-circuit protection	<b>157015</b>	0.100
Triangular socket wrench	 14845E00	special wrench for triangle head bolts	<b>140482</b>	0.044

E5

**Dimensional drawings** (all dimensions in mm) - subject to modifications



**8146/5052-C796, -C797 and -C814 fire alarm stations**

We reserve the right to make alterations to the technical data, dimensions, weights, designs and products available without notice. The illustrations cannot be considered binding.