

# Control Stations in Sheet Steel or Stainless Steel

Series 8125



www.stahl.de



01848E00

- > Enclosure in electropolished stainless steel 1.4404 (AISI 316L) or zinc-galvanised sheet steel
- > 6 basic enclosure sizes with different enclosure heights
- > Can be combined to larger units
- > Equipped with built-in devices for snap-on mounting
  - Control devices
  - Indicating lamps
  - Illuminated pushbuttons
  - Control switches
  - Ammeters
  - Voltmeters
- > Optionally available with:
  - Flanges
  - Cover hinges
- > Contact blocks 8082 and 8208 with SIL certificates



E4

Control devices and control units are assembled clearly in Series 8125 control stations. The enclosure is available in electropolished stainless steel 1.4404 (AISI 316L) or in zinc-galvanised sheet steel. The product range includes six basic enclosure sizes with different heights. Since there are so many possible combinations of components, every control station Series 8125 is designed and manufactured to order. The number of units installed depends on the size of the control station as well as on the space required for the built-in devices. Individual control stations can be combined to larger units by means of connection frames.

	ATEX / IECEx						Zone	Class I (NEC 505) (NEC 506)						Division	Class I		Class II		Class III	
	0	1	2	20	21	22		0	1	2	20	21	22		1	2	1	2	1	2
For use	x	x			x	x	For use in		x	x					x	x*	x	x	x	

x\* = Canada

**WebCode 8125D**

# Control Stations in Sheet Steel or Stainless Steel

## Series 8125

**Equipment Table** for Control Stations 8125, for Units with Contact Spacing of 42 mm



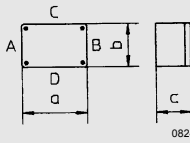
Enclosure	Dimensions [mm]	Equipment configuration maximum options with built-in units with contact spacing of 42 mm such as: control units 8082, indicating lamps 8010 and illuminated buttons 8082/8010	Ordering code	Weight (empty enclosure) [kg]
Enclosure size 4	 a    b    c 176 116 91	Fig. 4.1  Side facing down	8125/5041-..	1,0
Enclosure size 5	 a    b    c 176 176 91	Fig. 5.1    Fig. 5.2    Fig. 5.3    Fig. 5.4  Side facing down	8125/5051-..	1,5
Enclosure size 6	 a    b    c 236 176 91	Fig. 6.1    Fig. 6.2    Fig. 6.3    Fig. 6.4  Side facing down	8125/5061-..	2,1
Enclosure size 7	 a    b    c 360 176 91	Fig. 7.1    Fig. 7.2  Side facing down	8125/5071-..	3,1
<b>Order Number Supplement</b>	<b>Enclosure material:</b>	sheet steel, painted	8125/...-1.	
		stainless steel	8125/...-2.	
	<b>Please specify side facing down:</b>	side A bottom (see above)	8125/...-A	
		side D bottom (see above)	8125/...-D	

# Control Stations in Sheet Steel or Stainless Steel

## Series 8125



Enclosure



Equipment configuration maximum options with built-in units with contact spacing of 42 mm such as:  
control units 8082, indicating lamps 8010 and illuminated buttons 8082/8010

Ordering code

Weight (empty enclosure)  
[kg]

Enclosure size	Dimensions [mm] a    b    c	Fig. 7.3	Fig. 7.4	Ordering code	Weight (empty enclosure) [kg]
Enclosure size 7	360   176   91	<p>08943E00</p>	<p>08944E00</p>	8125/5071-..	3,1
Side facing down		A	A		
Enclosure size 8	360   360   91	<p>08948E00</p>	<p>08949E00</p>	8125/5081-..	5,6
Side facing down		D	D		
Enclosure size 9	727   360   91	<p>08954E00</p>		8125/5091-..	9,2
Side facing down		D			
Enclosure size 9	727   360   91	<p>08952E00</p>	<p>08953E00</p>	8125/5091-..	9,2
Side facing down		A	A		
<b>Order Number Supplement</b>	<b>Enclosure material:</b>	sheet steel, painted		8125/....-1.	
		stainless steel		8125/....-2.	
	<b>Please specify side facing down:</b>	side A bottom (see above)		8125/....-A	
		side D bottom (see above)		8125/....-D	

E4

# Control Stations in Sheet Steel or Stainless Steel

## Series 8125

**Equipment Table** for Control Stations 8125, for Units with Contact Spacing of > 42 mm



Enclosure	Dimensions [mm]	Equipment configuration maximum options with built-in units with contact spacing of 42 mm such as: control switches 8008, ammeters 8405, control units 8082 with actuators $\varnothing > 38$ mm	Ordering code	Weight (empty enclosure) [kg]
Enclosure size 4	 a    b    c 176 116 91	Fig. 4.4  08925E00 Fig. 4.5  08926E00 Fig. 4.6  08927E00 Fig. 4.7  08928E00	8125/5041-..	1,0
Side facing down		A                    A                    D                    D		
Enclosure size 5	a    b    c 176 176 91	Fig. 5.5  08957E00 Fig. 5.6  08958E00	8125/5051-..	1,5
Side facing down		D                    D		
Enclosure size 6	a    b    c 236 176 91	Fig. 6.5  08959E00 Fig. 6.6  08940E00	8125/5061-..	2,1
Side facing down		A                    A		
Enclosure size 7	a    b    c 360 176 91	Fig. 7.5  08945E00	8125/5071-..	3,1
Side facing down		D		
<b>Order Number Supplement</b>	<b>Enclosure material:</b>	sheet steel, painted stainless steel	8125/...-1. 8125/...-2.	
	<b>Please specify side facing down:</b>	side A bottom (see above) side D bottom (see above)	8125/...-A 8125/...-D	

# Control Stations in Sheet Steel or Stainless Steel

## Series 8125



Enclosure		Equipment configuration maximum options with built-in units with contact spacing of 42 mm such as: control switches 8008, ammeters 8405, control units 8082 with actuators $\varnothing > 38$ mm		Ordering code	Weight (empty enclosure) [kg]	
				8125/5071-...	3,1	
Enclosure size 7	Dimensions [mm] a    b    c 360 176 91	Fig. 7.6	Fig. 7.7			
Side facing down		A	A			
Enclosure size 8		Dimensions [mm] a    b    c 360 360 91	Fig. 8.3	Fig. 8.4	8125/5081-...	5,6
Side facing down		D	D			
Enclosure size 9		Dimensions [mm] a    b    c 727 360 91	Fig. 9.4		8125/5091-...	9,2
Side facing down		D				
Enclosure size 9		Dimensions [mm] a    b    c 727 360 91	Fig. 9.5		8125/5091-...	9,2
Side facing down		D				
<b>Order Number Supplement</b>		<b>Enclosure material:</b>		sheet steel, painted	8125/....-1.	
				stainless steel	8125/....-2.	
		<b>Please specify side facing down:</b>		side A bottom (see above)	8125/....-A	
				side D bottom (see above)	8125/....-D	

E4

## Control Stations in Sheet Steel or Stainless Steel

### Series 8125

#### Explosion Protection

##### Marking

IECEX	
Gas explosion protection	Ex dem ia/ib [ia/ib] IIA, IIB, IIC T6, T5, T4
Dust explosion protection	Ex tD A21 IP65 T80°C, T95°C, T130°C
Europe (ATEX)	
Gas explosion protection	⊕ II 2 G Ex de ia/ib [ia/ib] mq IIA, IIB, IIC T6, T5, T4
Dust explosion protection	⊕ II 2 D Ex tD A21 IP66 T80°C, T95°C, T130°C

##### Certificates

IECEX	IECEX PTB 06.0079
Europe (ATEX)	
Gas explosion protection	PTB 01 ATEX 1001
Dust explosion protection	PTB 01 ATEX 1001
Other certificates	Brazil (UL do Brasil), India (PESO), Canada (CSA), China (CQST Ex), Kazakhstan (JSC), Russia (CTB), USA (UL), ship approval (RS)

#### Technical Data

##### Electrical data

Rated voltage	max. 1100 V AC/DC
Rated operational current	max. 630 A

##### Ambient conditions

Ambient temperature	- 55 ... + 55 °C (depending on used Ex components)
---------------------	--

##### Mechanical data

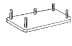


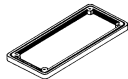
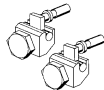
Degree of protection	IP66 (depending on the cable glands used)
Material	
Enclosure	
Standard	Zinc-galvanised sheet steel, painted in light grey (RAL 7032)
Option	Stainless steel 1.4404 (AISI 316L), electropolished, painting possible to order
Gasket	Polyurethane, foam
Flange	
Standard	In the standard version, the enclosures are supplied without flanges.
Option	Depending on order requirements the enclosures can be installed on one or more sides with flanges; flange material: sheet steel, zinc-galvanised or stainless steel
Cover fixing	
Standard	with positively retained M6 stainless-steel combo-head screws
Option	with cover hinges
Connection	Depending on order requirements at the built-in devices or at the terminal blocks The rated operational voltage, the rated operational current and the rated cross-section depend on the terminal type used and the explosion protected components.
Terminal blocks	Permissible rated cross-section which can be used - max. 240 mm <sup>2</sup> . The maximum number of terminals for the respective enclosure size is indicated in the EC-type examination certificate.
Tightening torque	according to specifications of the terminal block manufacturer

# Control Stations in Sheet Steel or Stainless Steel

Series 8125



## Accessories and Spare Parts

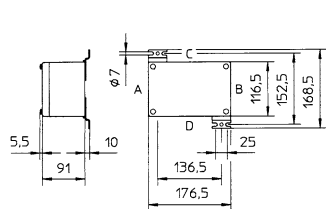
Designation	Illustration	Description	Order number	Weight kg	
Flange	 05740E00	Size 1 128 x 68 x 5 mm Sheet steel	<b>134216</b>	0.200	
		Size 1 128 x 68 x 5 mm Stainless steel	<b>135051</b>	0.340	
		Can be mounted on the enclosure	Side		
		8125/.051	C / D		
		8125/.061	A / B / C / D		
		8125/.071	A / B / C / D		
	 05738E00	Size 2 266 x 126 x 5 mm Sheet steel	<b>134245</b>	1.050	
		Size 2 266 x 126 x 5 mm Stainless steel	<b>135093</b>	1.310	
		Can be mounted on the enclosure	Side		
		8125/.073	C / D		
		8125/.083; /.085	A / B / C / D		
		8125/.093; /.095	A / B / C / D		
 05739E00	Size 3 126 x 126 x 5 mm Sheet steel	<b>134274</b>	1.050		
	Size 3 126 x 126 x 5 mm Stainless steel	<b>135125</b>	0.630		
	Can be mounted on the enclosure	Side			
	8125/.063	A / B / C / D			
	8125/.073	A / B			
	Frame	 04901E00	Size 0 68 x 68 mm	<b>136012</b>	0.010
Size 1 68 x 128 mm			<b>135974</b>	0.020	
Size 2 126 x 266 mm			<b>136031</b>	0.040	
Size 3 126 x 126 mm			<b>136235</b>	0.100	
Cover hinges	 05737E00	8125 for retrofitting at the enclosure Mounting kit consisting of:			
		2 hinges	<b>134943</b>	0.034	
		3 hinges	<b>134949</b>	0.051	

E4

# Control Stations in Sheet Steel or Stainless Steel

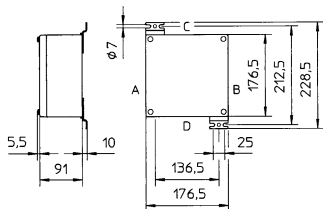
## Series 8125

### Dimensional Drawings (All Dimensions in mm) - Subject to Alterations



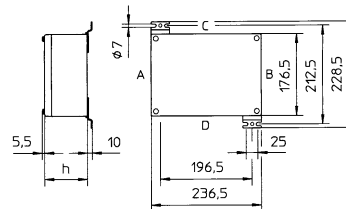
8125/.04.

04554E00



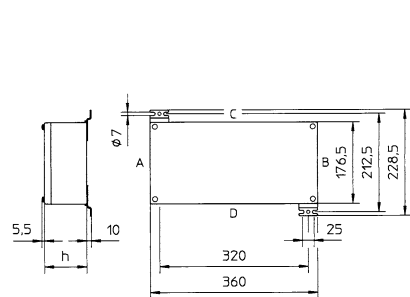
8125/.05.

04555E00



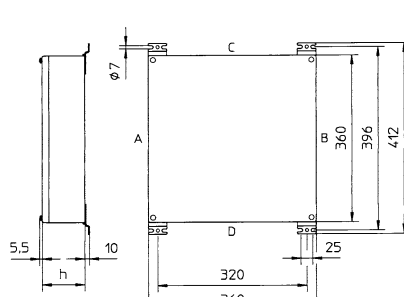
8125/.06.

04556E00



8125/.07.

04557E00



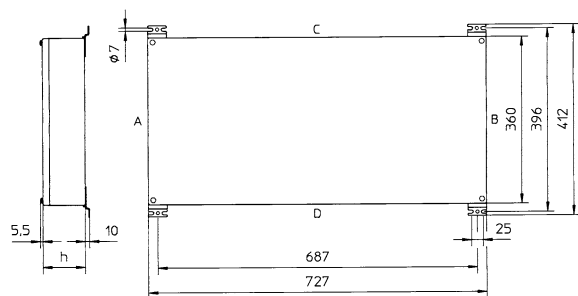
8125/.08.

04558E00



Additional dimension for flange

04560E00



8125/.09.

04559E00

Enclosure	Height of enclosure h			
	8125/...1 91 mm	8125/...3 150 mm	8125/...5 190 mm	8125/...6 230 mm
8125/.04.	X	-	-	-
8125/.05.	X	-	-	-
8125/.06.	X	X	-	-
8125/.07.	X	X	-	-
8125/.08.	X	X	X	X
8125/.09.	X	X	X	-

X ... can be supplied

We reserve the right to make alterations to the technical data, weights, dimensions, designs and products available without notice. The illustrations cannot be considered binding.