

Time Relay for Panel Mounting Series 8214



www.stahl.de



- > The time relays are available in pick-up delayed and drop-out delayed versions
- > Both pre-selected time range and time setting can be adjusted externally during operation



09852E00

	ATEX / IECEx					
Zone	0	1	2	20	21	22
For use in		x	x			

E4

WebCode 8214C

Time Relay for Panel Mounting

Series 8214

Selection Table

Version		Order number	Weight kg
8214 Time relay	Supplement function, time range, voltage and frequency	8214/122-2-S03	4.700

Order Number Supplement

Monofunction	<input type="checkbox"/> Pick-up delay <input type="checkbox"/> Pick-up delay no voltage protected	<input type="checkbox"/> 0.1 s ... 30 h <input type="checkbox"/> 0.2 s ... 60 h	<input type="checkbox"/> 230 V, 50 Hz ... 60 Hz <input type="checkbox"/> 110 V ... 115 V, 50 Hz ... 60 Hz	<input type="checkbox"/> 1 delayed and 1 immediate changeover <input type="checkbox"/> 2 delayed changeovers
Multifunction	<input type="checkbox"/> Pick-up delay <input type="checkbox"/> Drop-out delay <input type="checkbox"/> On pulse <input type="checkbox"/> Off pulse <input type="checkbox"/> Pick-up and drop-out delay <input type="checkbox"/> Pulse former <input type="checkbox"/> Clock generator starts with pause <input type="checkbox"/> Clock generator starts with pulse	<input type="checkbox"/> 0.05 s ... 1 s <input type="checkbox"/> 0.5 s ... 10 s <input type="checkbox"/> 3 s ... 1 min <input type="checkbox"/> 30 s ... 10 min <input type="checkbox"/> 3 min ... 1 h <input type="checkbox"/> 30 min ... 10 h <input type="checkbox"/> 5 h ... 100 h	<input type="checkbox"/> 24 V DC <input type="checkbox"/> 230 V AC, 50 Hz ... 60 Hz	<input type="checkbox"/> 1 delayed and 1 immediate changeover <input type="checkbox"/> 2 delayed changeovers

Explosion Protection

Marking

IECEX	Ex de [ia/ib] IIC T6, T5 Ex d [ia/ib] IIC T6, T5
Europe (ATEX)	II 2 G Ex de IIC T6

Certificates

IECEX	IECEX PTB 06.0070
Europe (ATEX)	PTB 02 ATEX 1102
Other certificates	Belarus (Gospromnadzor)

Technical Data

Electrical data

Nominal voltage	24 V DC 110 ... 115 V AC, 230 V AC, 50 ... 60 Hz
Special voltage	42, 48 V AC, 125 ... 127 V AC, 240 V AC, 50 ... 60 Hz

Ambient conditions

Ambient temperature	- 10 ... + 40 °C
---------------------	------------------

Mechanical data

Degree of protection	IP54
Enclosure material	Aluminium, powder coated
Contacts	
Pick-up delayed	2 contacts: - 1 immediate changeover - 1 delayed changeover Pick-up delay (additive) with separate activation of magnetic coupling and motor
Drop-out delayed	2 contacts: - 1 immediate changeover and 1 delayed changeover or 2 delayed changeovers (adjustable)

Dimensional Drawings (All Dimensions in mm) - Subject to Alterations

Time relay, 8214/122-2-S03

For installation remove cable entries and earthing terminals

Panel cutout

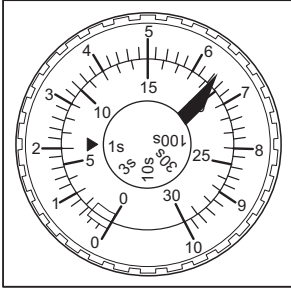
03511E00
03514E00

Time Relay for Panel Mounting

Series 8214

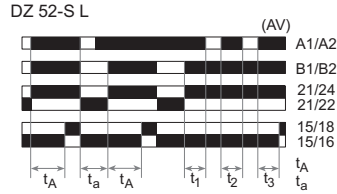


Functional Diagrams and Connection Diagrams

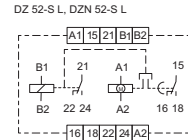


Time relay with monofunction

07904E00



06124E00

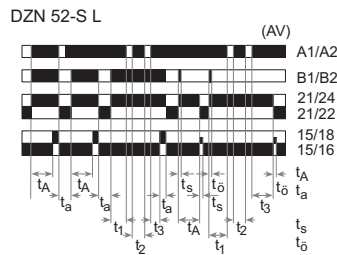


07905E00

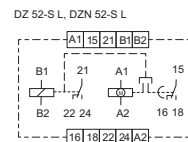
Pick-up delay and 1 delayed changeover and 1 immediate changeover

A1/A2	Supply voltage	t_A	Operating time
B1/B2	Excitation parameter	t_a	Break time, must be > release time of the timer

21/24	Immediate contact
21/22	
15/18	Delayed contact
15/16	



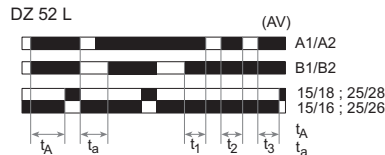
06125E00



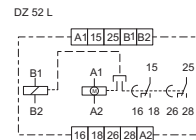
07905E00

Pick-up delay no voltage protected 1 delayed changeover and 1 immediate changeover

A1/A2	Supply voltage	t_A	Operating time
B1/B2	Excitation parameter	t_a	Break time, must be > release time of the contact
21/24	Immediate contact	t_s	Closing time, must be > minimum excitation time
21/22			
15/18	Delayed contact	t_0	Opening time, applies to NC contact only, NO contact is not actuated
15/16			



06135E00



06121E00

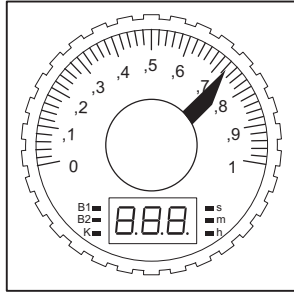
Pick-up delay 2 delayed changeovers

A1/A2	Supply voltage	t_A	Operating time
B1/B2	Excitation parameter	t_a	Break time, must be > release time of the contact
15/18; 25/28	Delayed contact		
15/16; 25/26			

Time Relay for Panel Mounting

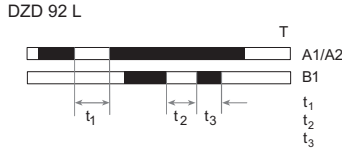
Series 8214

Functional Diagrams and Connection Diagrams

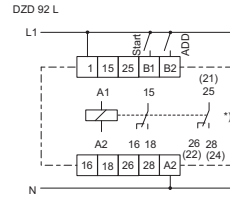


Multifunction time relay

06122E00



06179E00

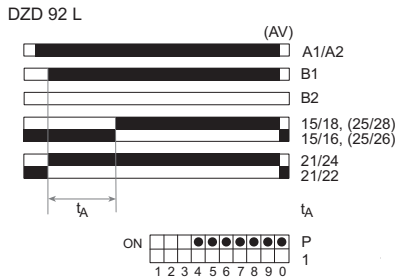


06123E00

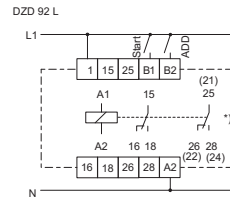
Basic times

1 delayed changeover and 1 immediate changeover or 2 delayed changeovers

A1/A2	Supply voltage	t_1	must be > restart time 1
B1	Excitation parameter, LED (B1) red	t_2	must be > recovery time 2
		t_3	Make time, must be > minimum ON time



06162E00

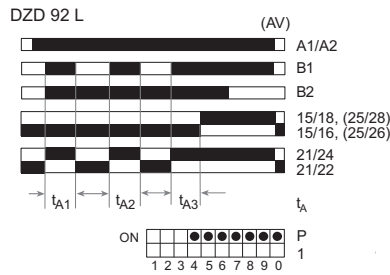


06123E00

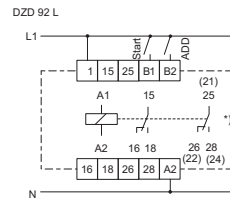
Pick-up delay

1 delayed changeover and 1 immediate changeover or 2 delayed changeovers

A1/A2	Supply voltage	21/24	Immediate changeover
		21/22	
B1	Excitation parameter, LED (B1) red	t_A	Operating time
B2	Additive operation, LED (B2) red		
15/18 (25/28)	Delayed contact, LED (K) red		
15/16 (25/26)	LED (K) red		



06163E00



06123E00

Pick-up delay additive

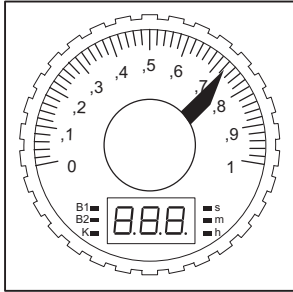
1 delayed changeover and 1 immediate changeover or 2 delayed changeovers

A1/A2	Supply voltage	21/24	Immediate changeover
		21/22	
B1	Excitation parameter, LED (B1) red	t_A	n
			$= \sum t_{Ax}$
			t
B2	Additive operation, LED (B2) red		
15/18 (25/28)	Delayed contact, LED (K) red		
15/16 (25/26)	LED (K) red		

Time Relay for Panel Mounting Series 8214

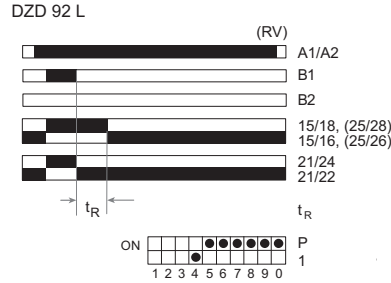


Functional Diagrams and Connection Diagrams

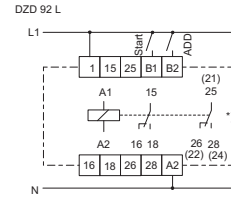


Multifunction time relay

06122E00



06164E00

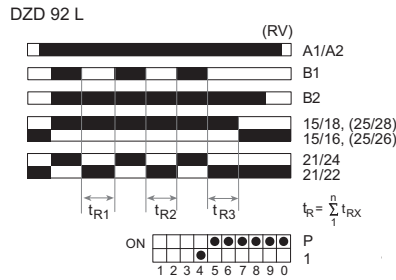


06123E00

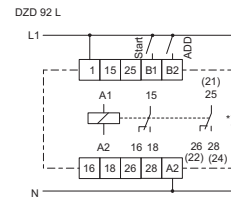
Drop-out delay

1 delayed changeover and 1 immediate changeover or 2 delayed changeovers

A1/A2	Supply voltage	21/24	Immediate changeover
		21/22	
B1	Excitation parameter, LED (B1) red	t_R	Set release time
B2	Additive operation, LED (B2) red		
15/18 (25/28)	Delayed contact, LED (K) red		
15/16 (25/26)			



06165E00



06123E00

Drop-out delay additive

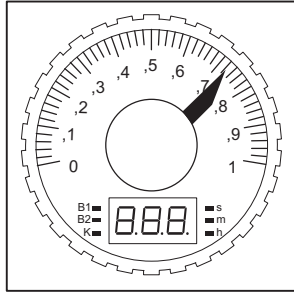
1 delayed changeover and 1 immediate changeover or 2 delayed changeovers

A1/A2	Supply voltage	21/24	Immediate changeover
		21/22	
B1	Excitation parameter, LED (B1) red		
B2	Additive operation, LED (B2) red		
15/18 (25/28)	Delayed contact, LED (K) red		
15/16 (25/26)			

Time Relay for Panel Mounting

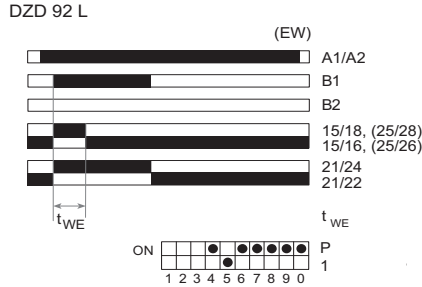
Series 8214

Functional Diagrams and Connection Diagrams

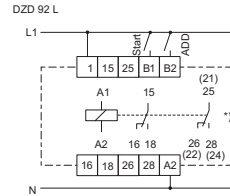


Multifunction time relay

06122E00



06166E00

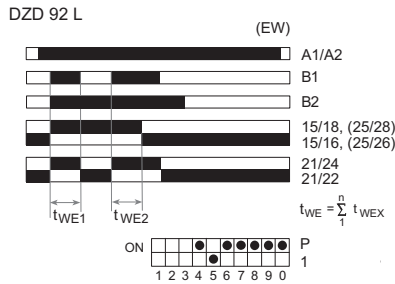


06123E00

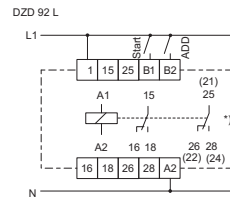
On pulse

1 delayed changeover and 1 immediate changeover or 2 delayed changeovers

A1/A2	Supply voltage	21/24 21/22	Immediate changeover
B1	Excitation parameter, LED (B1) red	t_{WE}	Selected interval ON time
B2	Additive operation, LED (B2) red		
15/18 (25/28)	Delayed contact,		
15/16 (25/26)	LED (K) red		



06167E00



06123E00

On pulse additive

1 delayed changeover and 1 immediate changeover or 2 delayed changeovers

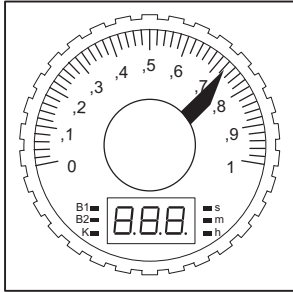
A1/A2	Supply voltage	21/24 21/22	Immediate changeover
B1	Excitation parameter, LED (B1) red		
B2	Additive operation, LED (B2) red		
15/18 (25/28)	Delayed contact,		
15/16 (25/26)	LED (K) red		

Time Relay for Panel Mounting

Series 8214

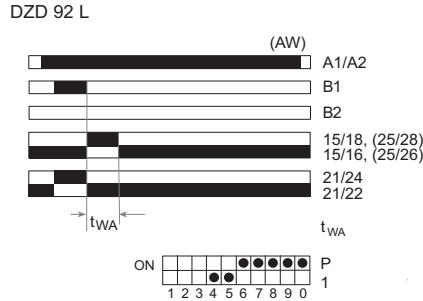


Functional Diagrams and Connection Diagrams

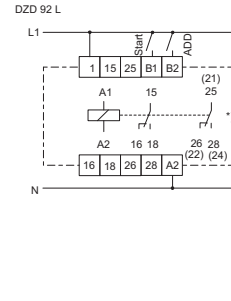


Multifunction time relay

06122E00



06168E00

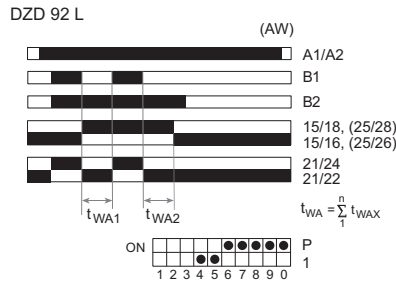


06123E00

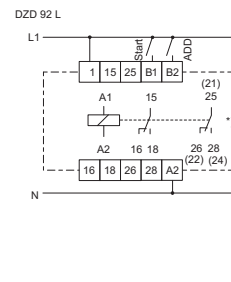
Off pulse

1 delayed changeover and 1 immediate changeover or 2 delayed changeovers

A1/A2	Supply voltage	21/24 21/22	Immediate changeover
B1	Excitation parameter, LED (B1) red	t_{WA}	Selected interval OFF time
B2	Additive operation, LED (B2) red		
15/18 (25/28) 15/16 (25/26)	Delayed contact, LED (K) red		



06169E00



06123E00

Off pulse additive

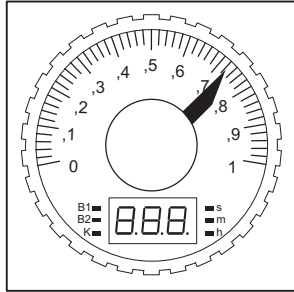
1 delayed changeover and 1 immediate changeover or 2 delayed changeovers

A1/A2	Supply voltage	21/24 21/22	Immediate changeover
B1	Excitation parameter, LED (B1) red	t_A	n $= \sum t_{WAx}$ t
B2	Additive operation, LED (B2) red		
15/18 (25/28) 15/16 (25/26)	Delayed contact, LED (K) red		

Time Relay for Panel Mounting

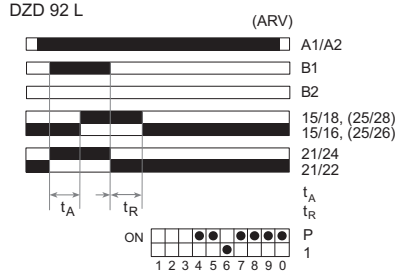
Series 8214

Functional Diagrams and Connection Diagrams

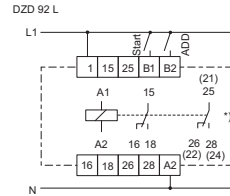


Multifunction time relay

06122E00



06170E00

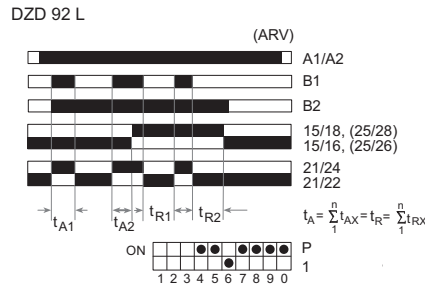


06123E00

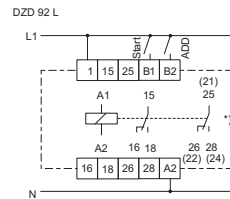
Pick-up and drop-out delay

1 delayed changeover and 1 immediate changeover or 2 delayed changeovers

A1/A2	Supply voltage	21/24 21/22	Immediate changeover
B1	Excitation parameter, LED (B1) red	t_A	Set operating time
B2	Additive operation, LED (B2) red	t_R	Set release time
15/18 (25/28) 15/16 (25/26)	Delayed contact, LED (K) red		



06171E00



06123E00

Pick-up and drop-out delay additive

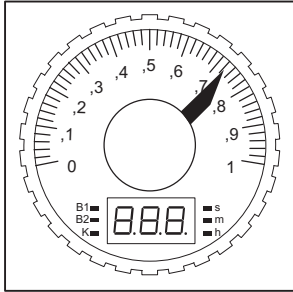
1 delayed changeover and 1 immediate changeover or 2 delayed changeovers

A1/A2	Supply voltage	21/24 21/22	Immediate changeover
B1	Excitation parameter, LED (B1) red		
B2	Additive operation, LED (B2) red		
15/18 (25/28) 15/16 (25/26)	Delayed contact, LED (K) red		

Time Relay for Panel Mounting Series 8214

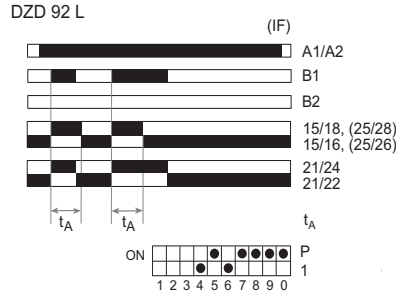


Functional Diagrams and Connection Diagrams

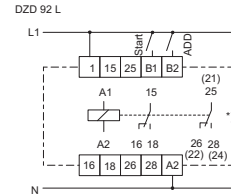


Multifunction time relay

06122E00



06173E00



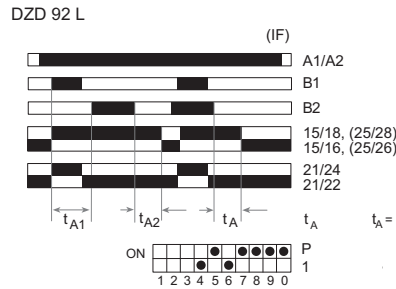
06123E00

Pulse former

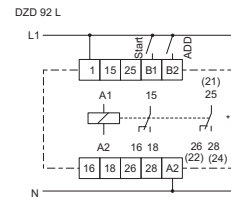
1 delayed changeover and 1 immediate changeover or 2 delayed changeovers

A1/A2	Supply voltage	21/24	Immediate changeover
		21/22	
B1	Excitation parameter, LED (B1) red	t_A	Set operating time
B2	Additive operation, LED (B2) red		
15/18 (25/28)	Delayed contact, LED (K) red		
15/16 (25/26)			

E4



06174E00



06123E00

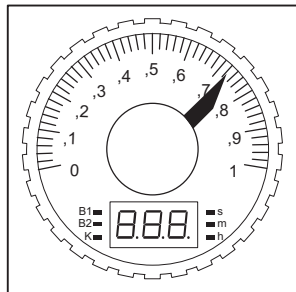
Pulse former additive

1 delayed changeover and 1 immediate changeover or 2 delayed changeovers

A1/A2	Supply voltage	21/24	Immediate changeover
		21/22	
B1	Excitation parameter, LED (B1) red	t_A	Set operating time
B2	Additive operation, LED (B2) red		
15/18 (25/28)	Delayed contact, LED (K) red		
15/16 (25/26)			

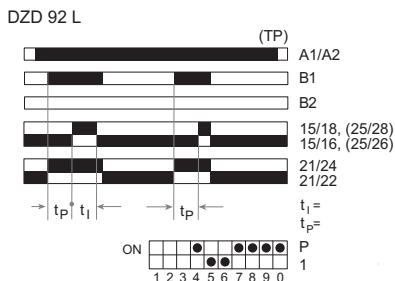
Time Relay for Panel Mounting Series 8214

Functional Diagrams and Connection Diagrams

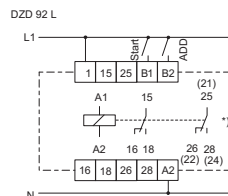


Multifunction time relay

06122E00



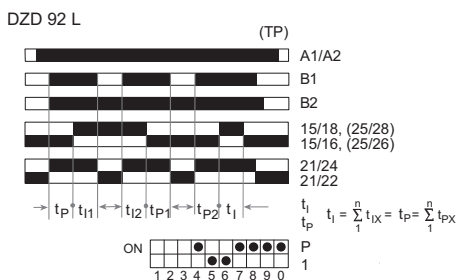
06175E00



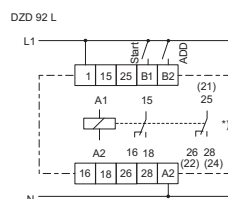
06123E00

Clock generator starts with pause
1 delayed changeover and 1 immediate changeover or 2 delayed changeovers

A1/A2	Supply voltage	21/24 21/22	Immediate changeover
B1	Excitation parameter, LED (B1) red	t_i	Pulse time
B2	Additive operation, LED (B2) red	t_p	Pause time
15/18 (25/28) 15/16 (25/26)	Delayed contact, LED (K) red		



06176E00



06123E00

Clock generator starts with pause additive
1 delayed changeover and 1 immediate changeover or 2 delayed changeovers

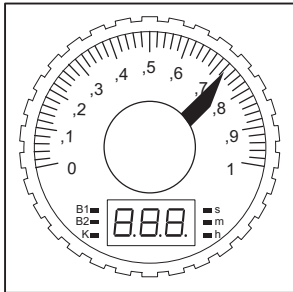
A1/A2	Supply voltage	21/24 21/22	Immediate changeover
B1	Excitation parameter, LED (B1) red	t_i	Pulse time
B2	Additive operation, LED (B2) red	t_p	Pause time
15/18 (25/28) 15/16 (25/26)	Delayed contact, LED (K) red		

Time Relay for Panel Mounting

Series 8214

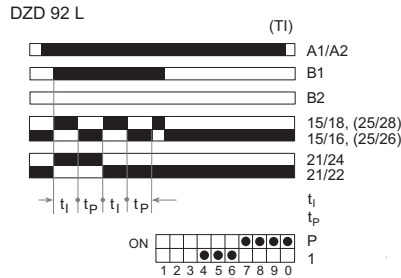


Functional Diagrams and Connection Diagrams

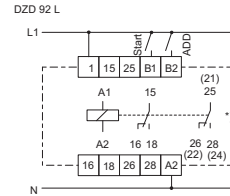


Multifunction time relay

06122E00



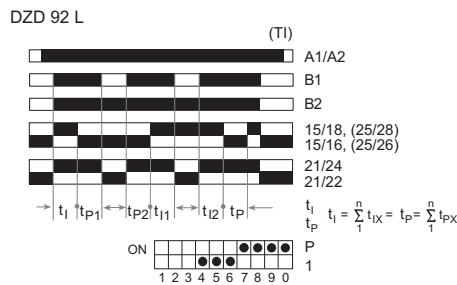
06177E00



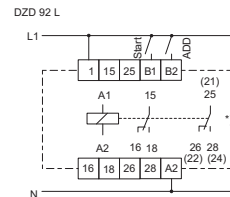
06123E00

Clock generator starts with pulse
1 delayed changeover and 1 immediate changeover or 2 delayed changeovers

A1/A2	Supply voltage	21/24 21/22	Immediate changeover
B1	Excitation parameter, LED (B1) red	t_i	Pulse time
B2	Additive operation, LED (B2) red	t_p	Pause time
15/18 (25/28) 15/16 (25/26)	Delayed contact, LED (K) red		



06178E00



06123E00

Clock generator starts with pulse additive
1 delayed changeover and 1 immediate changeover or 2 delayed changeovers

A1/A2	Supply voltage	21/24 21/22	Immediate changeover
B1	Excitation parameter, LED (B1) red	t_i	Pulse time
B2	Additive operation, LED (B2) red	t_p	Pause time
15/18 (25/28) 15/16 (25/26)	Delayed contact, LED (K) red		

We reserve the right to make alterations to the technical data, weights, dimensions, designs and products available without notice. The illustrations cannot be considered binding.