

Pipe Plugs and Nail Straps

Application:

To close up a taped hole or hub.

Features:

Threaded (NPT)

Standard Materials:

Malleable Iron

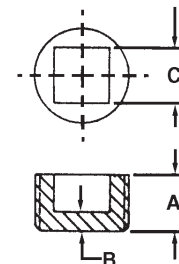
Standard Finish:

Zinc Plated

Pipe Plugs - For Threaded Rigid Conduit and IMC



Type P10



CATALOG NUMBER	TRADE SIZE	DIM A	DIM B	DIM C	UNIT PACK	STANDARD PACK	WEIGHT (LBS.) PER 100 PCS.	NAED MFG #78-5994 UPC/DCI #
P10	1/2"	0.560	0.160	0.382	-	100	7	14101
P11	3/4"	0.630	0.180	0.508	-	100	12	14111
P12	1"	0.750	0.200	0.508	-	100	21	14121
P13	1-1/4"	0.800	0.759	0.220	-	100	33	14131
P14	1-1/2"	0.830	0.759	0.240	-	25	45	14141
P15	2"	0.880	0.884	0.260	-	25	78	14151
P16	2-1/2"	1.070	1.137	0.290	-	10	148	14161
P17	3"	1.130	1.391	0.310	-	10	219	14171
P18	3-1/2"	1.180	1.518	0.340	-	5	336	14181
P19	4"	1.220	2.022	0.370	-	5	378	14191
P20	5"	1.310	2.275	0.400	-	5	540	14201
P21	6"	1.375	2.530	0.437	-	5	780	14211

Square Head Plugs are available upon request. Please call factory for pricing and availability.

Nail Straps - For Threaded Rigid Conduit and EMT

Application:

To secure rigid to wooden structure members. Use in place of one hole straps.

Features:

- Tensile strength of Cast Steel is 30% higher than Malleable Iron
- Withstands greater striking force

Standard Materials:

Cast Steel

Standard Finish:

Zinc Plated



Type 360M

CATALOG NUMBER	CONDUIT SIZES THINWALL	RIGID	UNIT PACK	STANDARD PACK	WEIGHT (LBS.) PER 100 PCS.	NAED MFG #78-5994 UPC/DCI #
360M	1/2"	3/8"	100	1000	3	83607
361M	3/4"	1/2"	100	1000	4	83617
362M	1"	3/4"	100	1000	6	83627