

# Standard Conduit Locknuts

## For Threaded Rigid Conduit and IMC

### Application:

Conduit locknuts for securing threaded conduit or connectors with tapered or straight thread, to a knockout or unthreaded slip hole.

### Standard Materials:

Steel

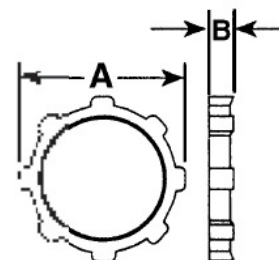
### Standard Finish:

Zinc Plated

## Standard Locknuts



Type 707

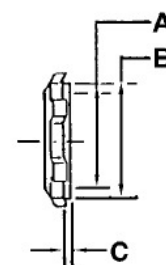


CATALOG NUMBER	TRADE SIZE	DIM A	DIM B	UNIT PACK	STANDARD PACK	WEIGHT (LBS.) PER 100 PCS.	NAED MFG #78-5994 UPC/DCI #
706	1/2"	1.13	0.13	100	3000	1	17061
707	3/4"	1.40	0.13	100	1000	2	17071
708	1"	1.72	0.15	50	500	3	17081
709	1-1/4"	2.08	0.15	100	1000	4	17091
710	1-1/2"	2.40	0.16	100	1000	6	17101
711	2"	2.90	0.17	50	500	8	17111
712	2-1/2"	3.48	0.19	50	250	14	17121
713	3"	4.13	0.18	25	250	18	17131
714	3-1/2"	4.70	0.20	25	125	23	17141
715	4"	5.32	0.20	-	25	26	17151
716	5"	6.38	0.42	-	10	60	17161
717	6"	7.75	0.43	-	10	70	17171

## Sealing Locknuts



Type 706P



### Application:


Sealing locknuts provide a raintight seal when securing threaded conduit or connectors with tapered or straight thread, to a knockout or unthreaded slip hole of a box or enclosure. Installed as per the National Electrical Code Article 345-Intermediate Metal Conduit and Article 346-Rigid Metal Conduit

### Standard Materials:

Steel/Neoprene Gasket

### Standard Finish:

Zinc Plated

 UL Listed:  
E198258

CATALOG NUMBER	TRADE SIZE	DIM A	DIM B	DIM C	UNIT PACK	STANDARD PACK	WEIGHT (LBS.) PER 100 PCS.	NAED MFG #78-5994 UPC/DCI #
706P	1/2"	0.780	0.970	0.110	100	1000	1	17063
707P	3/4"	1.100	1.210	0.100	100	1000	2	17073
708P	1"	1.270	1.520	0.090	50	500	4	17083
709P	1-1/4"	1.550	1.860	0.110	-	100	6	17093
710P	1-1/2"	1.820	2.100	0.120	-	100	7	17103
711P	2"	2.300	2.610	0.120	-	50	10	17113
712P	2-1/2"	2.820	3.180	0.140	-	20	14	17123
713P	3"	3.450	3.870	0.200	-	10	19	17115
714P	3-1/2"	3.950	4.400	0.200	-	10	23	17116
715P	4"	4.450	4.930	0.210	-	10	27	17117
716P	5"	6.515	6.223	0.975	-	10	90	17118
717P	6"	7.785	7.225	1.100	-	10	100	17119

(718) 259-6100 • Fax: (718) 331-1874 • 1-800-626-1223  
www.sepco-usa.com

  
SteelElectric  
PRODUCTS