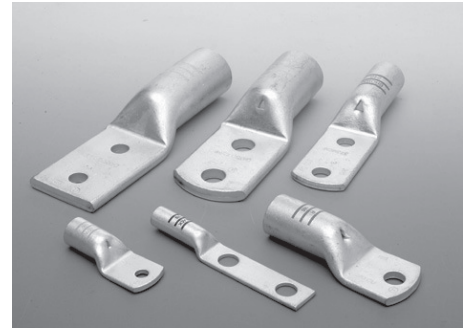


Terminal Lugs / Tube Terminals

● COPPER CABLES ONLY

- Available wire range : IEC standard cables of Metric Cables.
- Color coded on the barrel to eliminate errors during(IEC61238:2003) installation and select to easy crimping dies.
- Material : High Conductivity copper per 99.9% up with Electro-Tin Plated.
- Voltage Rating : 35kV



● TWO-HOLE(ROUND TYPE)

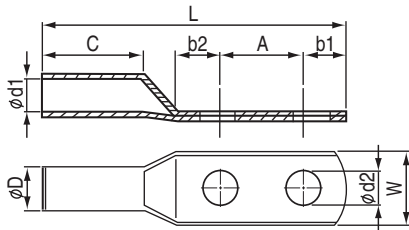


Fig. 1



UL listed

● TWO-HOLE(SQUARE TYPE)

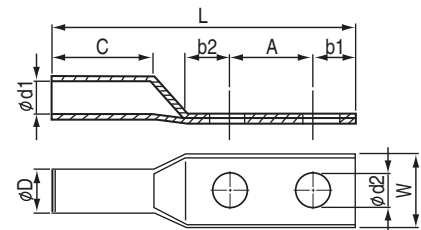


Fig. 2

Wire Range		Part No.	Stud Size	Dimension										Dies Part No.		Drawing
Metric	mm			W	ø D	ø d1	ø d2	A	b1=b2 ±2	C		L		AWG	mm	
CODE	FLEX									1-Cl.	2-Cl.	1-Cl.	2-Cl.			
10	10	PPET0201 -xx05 -	5	9	6.6	4.6	5.4	16	8	15	30	52	67	DAR8	DAR10	Fig 3 Fig 4
		-xx06 -	6				6.4									
		-xx08 -	8				8.4									
		-xx10 -	10				10.5									
		-xx12 -	12				13									
16	16	PPET0202 -xx05 -	5	15	7.5	5.5	5.4	16	8	15	30	52	67	DAR6	DAR16	
		-xx06 -	6				6.4									
		-xx08 -	8				8.4									
		-xx10 -	10				10.5									
		-xx12 -	12				13									
25	25	PPET0203 -xx05 -	5	13	9.5	7.2	5.4	16	8	17	33	54	70	DAR4	DAR25	
		-xx06 -	6				6.4									
		-xx08 -	8				8.4									
		-xx10 -	10				10.5									
		-xx12 -	12				13									
35		PPET0204 -xx05 -	5	16	11	8.5	5.4	19	9	20	33	62	75	DAR2	DAR35	
		-xx06 -	6				6.4									
		-xx08 -	8				8.4									
		-xx10 -	10				10.5									
		-xx12 -	12				13									
	35	-xx05-F	5	17	12	8.8	5.4	44.5	14	20	40	97	117	DARF2	DARF35	
		-xx06-F	6				6.4									
		-xx08-F	8				8.4									
		-xx10-F	10				10.5									
		-xx12-F	12				13									
50		PPET0205 -xx05 -	5	17.5	12	9.5	5.4	44.5	14	20	35	97	112	DAR1	DAR50	
		-xx06 -	6				6.4									
		-xx08 -	8				8.4									
		-xx10 -	10				10.5									
		-xx12 -	12				13									
	50	PPET0206 -xx05 -	5	19	13.2	10.2	5.4	44.5	14	20	35	100	115	DAR1/0 DAR F1	DARF50	
		-xx06 -	6				6.4									
		-xx08 -	8				8.4									
		-xx10 -	10				10.5									
		-xx12 -	12				13									
70		PPET0207 -xx08 -	8	21	14.5	11.2	8.4	44.5	14	24	45	108	128	DAR 2/0 DARF1/0	DAR70	
		-xx10 -	10				10.5									
		-xx12 -	12				13									
		-xx14 -	14				15									
		-xx16 -	16				17									
	70	PPET0208 -xx08 -	8	23	16	12.5	8.4	44.5	14	24	45	106	130	DAR 3/0 DARF2/0	DAR F70	
		-xx10 -	10				10.5									
		-xx12 -	12				13									
		-xx14 -	14				15									
		-xx16 -	16				17									
95		PPET0209 -xx08 -	8	25.5	17	13.3	8.4	44.5	14	24	40	106	122	DARF3/0	DAR 95	
		-xx10 -	10				10.5									
		-xx12 -	12				13									
		-xx14 -	14				15									
		-xx16 -	16				17									
	95	-xx08-F	8	26	18	14	8.4	44.5	14	24	47	112	135	DARF4/0	DAR F95	
		-xx10-F	10				10.5									
		-xx12-F	12				13									
		-xx14-F	14				15									
		-xx16-F	16				17									

Terminal Lugs / Tube Terminals

HOW TO ORDER

PPEO 0101 - XX05 - F

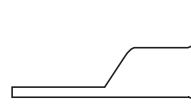
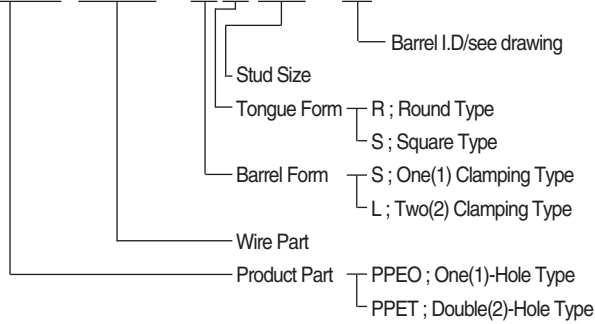


Fig. 3

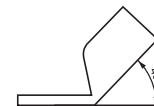


Fig. 4

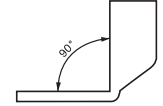


Fig. 5

For Flex. Conductor (Belled End)

Wire Range		Part No.	Stud Size	Dimension										Dies Part No.		Drawing
Metric	mm			W	øD	ød1	ød2	A	b1=b2 ±2	C		L		AWG	mm	
CODE	FLEX									1-Cl.	2-Cl.	1-Cl.	2-Cl.			
120		PPET0210 -xx08-	8	27.5	19	15.2	8.4	44.5	14	24	50	112	137	DAR 250	DAR120	Fig 3 Fig 4
		-xx10-	12				10.5									
		-xx12-	12				13									
		-xx14-	14				15									
		-xx16-	16				17					115	140			
150	120	PPET0211 -xx08-	8	31	21	16.8	8.4	44.5	17	30	50	122	142	DAR300	DAR150	DAR F120
		-xx10-	10				10.5									
		-xx12-	12				13									
		-xx14-	14				15									
		-xx16-	16				17									
		-xx08-F	8	31	22	17.5	8.4	44.5	17	30	50	124	147			
		-xx10-F	10				10.5									
		-xx12-F	12				13									
		-xx14-F	14				15									
		-xx16-F	16				17									
185	150	PPET0212 -xx10-	10	34	23.5	18.5	10.5	44.5	17	35	50	129	144	DAR 350	DAR185	DAR F150
		-xx12-	12				13									
		-xx14-	14				15									
		-xx16-	16				17									
		-xx20-	20				21									
200		PPET0113 -xx10-	10	37.5	25	20	10.5	44.5	17	35	50	129	144	DAR 400	DAR200	DAR F185
		-xx12-	12				13									
		-xx14-	14				15									
		-xx16-	16				17									
		-xx20-	20				21									
	185	-xx10-F	10	37.5	26	20.5	10.5	44.5	17	40	57	138	155			
		-xx12-F	12				13									
		-xx14-F	14				15									
		-xx16-F	16				17									
		-xx20-F	20				21									
240	240	PPET0214 -xx10-	10	40.5	28	22	10.5	44.5	17	40	57	142	159	DAR 500	DAR 240	DAR 125-26 DAR 125-26
		-xx12-	12				13									
		-xx14-	14				15									
		-xx16-	15				17									
		-xx20-	20				21									
		-xx24-	24				25		20			147	162			
300		PPET0215 -xx10-	10	43.5	30.5	24	10.5	44.5	20		60		162	DAR 600	DAR 300S	DAR 150-29 DAR 150-29 DAR 150-29
		-xx12-	12				13									
		-xx14-	14				15									
		-xx16-	16				17									
		-xx20-	20				21									
		-xx24-	24				25									
		PPET0216 -xx10-F	10	46	32	25	10.5	44.5	20		66		168	DAR 180-30	DAR 180-30	
		-xx12-F	12				13									
		-xx14-F	14				15									
		-xx16-F	16				17									
		-xx20-F	20				21									
		-xx24-F	24				25									
400		-xx12-	12	49	34	26.5	13	44.5	21		66		168	DAR 200-32	DAR 200-32	
		-xx14-	14				15									
		-xx16-	16				17									
		-xx20-	20				21									
		-xx24-	24				25									
500		PPET0217 -xx12-	12	56.5	40	30	13	44.5	21	60	73	176	189	DAR 240-38	DAR 240-38	
		-xx14-	14				15									
		-xx16-	16				17									
		-xx20-	20				21									
		-xx24-	24				25									
630		PPET0218 -xx12-	12	64.5	45	35.5	13	44.5	23		70		195	DAR 325-38	DAR 325-38	
		-xx14-	14				15									
		-xx16-	16				17									
		-xx20-	20				21									
		-xx24-	24				25									