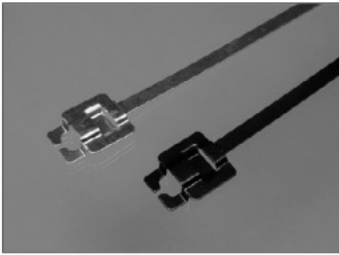


STAINLESS STEEL TIES

REUSABLE TIES



Ideal for telecommunications and oil rig, application

Resistant to extremely corrosive and hazardous environments

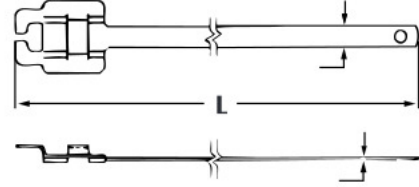
For single or double wrap applications

Coating : EP-E Black

Material : type 316 or 304 stainless steel

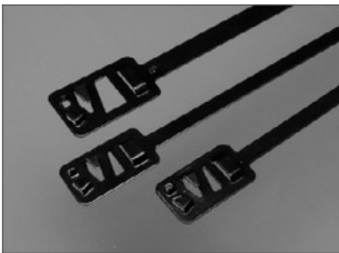
Standard pack : 100per bag

Coated thickness : 0.6mm (.021)



| Part No | Bundle Dia mm(inch) | L Length mm(inch) | W Width mm(inch) | Single | | Double | |
|------------|---------------------|-------------------|------------------|---------------------------|---------------------|---------------------------|---------------------|
| | | | | Min. Loop Tensile LBS.(N) | Clamp Force LBS.(N) | Min. Loop Tensile LBS.(N) | Clamp Force LBS.(N) |
| SRT-229-6 | 63(2.5) | 229(9) | 6(.24) | 75 (334) | 0-100 (0-445) | 300 (1334) | 0-100 (0-445) |
| SHT-305-6 | 86(3.5) | 305(12) | | | | | |
| SRT-457-6 | 144(5.7) | 457(18) | | | | | |
| SRT-610-6 | 193(7.6) | 610(25) | | | | | |
| SHT-229-9 | 63(2.5) | 229(9) | 9(.35) | | | | |
| SRT-305-9 | 86(3.5) | 305(12) | | | | | |
| SRT-457-9 | 144(5.7) | 457(18) | | | | | |
| SHT-610-9 | 193(7.6) | 610(25) | | | | | |
| SRTC-229-6 | 63(2.5) | 229(9) | 6(.24) | 100 (445) | 0-100 (0-445) | 500 (2224) | 0-150 (0-667) |
| SRTC-305-6 | 86(3.5) | 305(12) | | | | | |
| SRTC-457-6 | 144(5.7) | 457(18) | | | | | |
| SRTC-610-6 | 193(7.6) | 610(25) | | | | | |
| SRTC-229-9 | 63(2.5) | 229(9) | 9(.35) | | | | |
| SRTC-305-9 | 86(3.5) | 305(12) | | | | | |
| SRTC-457-9 | 144(5.7) | 457(18) | | | | | |
| SRTC-610-9 | 193(7.6) | 610(25) | | | | | |

RELEASABLE TIES



For single or double wrap application

Coating : EP-E Black

Material : type 316 or 304 stainless steel

Color : black

standard pack : 100 per bag



| Part No | Bundle Dia mm(inch) | L Length mm(inch) | W Width mm(inch) | STD PKG |
|-----------|---------------------|-------------------|------------------|---------|
| AST-229 | 63(2.5) | 229(9) | 6(.24) | 100 |
| AST-305 | 86(3.5) | 305(12) | | |
| AST-350 | 100(3.9) | 350(13.7) | | |
| AST-229H | 63(2.5) | 229(9) | 9(.35) | |
| AST-305H | 86(3.5) | 305(12) | | |
| AST-457H | 144(5.7) | 457(18) | | |
| AST-610H | 193(7.6) | 610(25) | | |
| ASTC229-6 | 63(2.5) | 229(9) | 6(.24) | 100 |
| ASTC305-6 | 86(3.5) | 305(12) | | |
| ASTC350-6 | 100(3.9) | 350(13.7) | | |
| ASTC229-9 | 63(2.5) | 229(9) | 9(.35) | |
| ASTC305-9 | 86(3.5) | 305(12) | | |
| ASTC457-9 | 144(5.7) | 457(18) | | |
| ASTC610-9 | 193(7.6) | 610(25) | | |