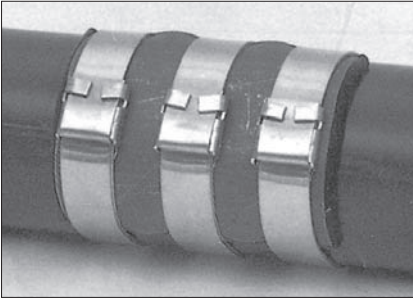
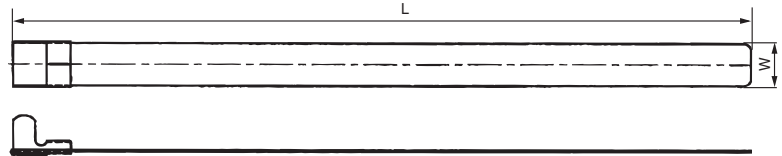


# STAINLESS STEEL TIES

## ● RB TYPE



These RB type Stainless Steel Ties shall be used for cable securing and selected in accordance with the types of cable and/or their location.  
 Material : Stainless Steel 304 or 316  
 Coating : PVC, EVA Black & Nylon  
 Application : Exposed weather DK, Galley, Laundry and Refrigerated room and that applied to the vessels which have duct keel, pump room and tunnel space.



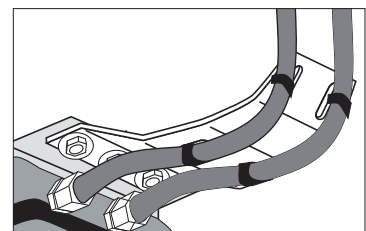
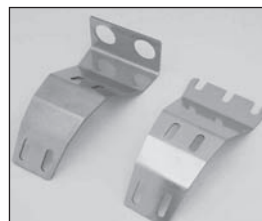
PART NO	BUNDLE DIA mm(inch)	"L" LENGTH mm(inch)	"W" WIDTH mm(inch)	TENSILE STRENGTH
RBC300-6	83(3.26)	300(11.8)	6.5(.255)	110Kg (250lbs)
RBC400-6	121(4.76)	400(15.7)		
RBC550-6	170(6.69)	550(21.6)		
RBC300-13	83(3.26)	300(11.8)	13.5(.531)	226Kg (500lbs)
RBC400-13	121(7.46)	400(15.7)		
RBC550-13	170(6.69)	550(21.6)		
RBC800-13	242(9.52)	800(31.5)		
RBC1200-13	369(14.52)	1200(47.2)	16.5(.649)	271Kg (600lbs)
RBC300-16	83(3.26)	300(11.8)		
RBC400-16	121(4.76)	400(15.7)		
RBC550-16	170(6.69)	550(21.6)		
RBC800-16	242(9.52)	800(31.5)		
RBC1200-16	369(14.52)	1200(47.2)	19.5(.748)	316Kg (700lbs)
RBC300-19	83(3.26)	300(11.8)		
RBC400-19	121(4.76)	400(15.7)		
RBC550-19	170(6.69)	550(21.6)		
RBC800-19	242(9.52)	800(31.5)		
RBC1200-19	369(14.52)	1200(47.2)		

## ● RB-Type



Part No	Used Width	Pkg Q'ty
RBK-6	RB-B-6	100PCS
RBK-13	RB-B-13	100PCS
RBK-16	RB-B-16	100PCS
RBK-19	RB-B-19	100PCS

## ● LIGHT FITTING (Cable Hanger)



Part No	DESCRIPTION
DLF-100	Fix with Cable Gland
DLF-200	Fix with Bolt