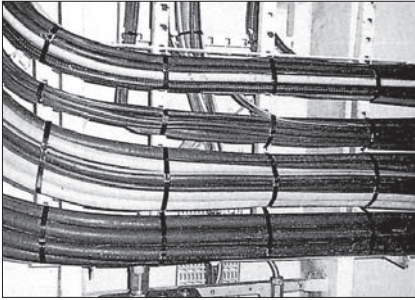


STAINLESS STEEL TIES

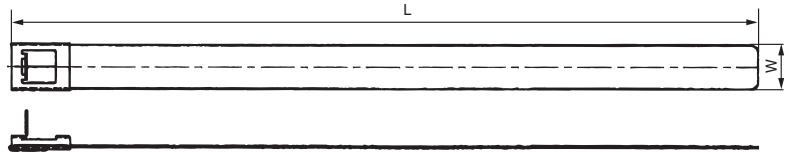
● MB Type



Dong-A MB type bands are used by electricians, plumbers and pipefitters to support ductwork, piping, conduit and cables.

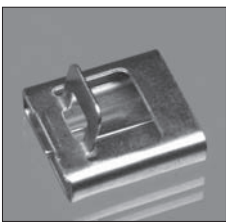
- Material : Stainless Steel 304 or 316
- Coating : PVC, EVA Black & Nylon
- Color : Black or Light Green

Application : Exposed weather DK, Galley, Laundry and Refrigerated room and that applied to the vessels which have duct keel, pump room and tunnel space.



PART NO	BUNDLE DIA mm(inch)	"L" LENGTH mm(inch)	"W" WIDTH mm(inch)	TENSILE STRENGTH
MBC300-6	83(3.26)	300(11.8)	6.5(.255)	110Kg (250lbs)
MBC400-6	121(4.76)	400(15.7)		
MBC550-6	170(6.69)	550(21.6)		
MBC300-13	83(3.26)	300(11.8)	13.5(.531)	226Kg (500lbs)
MBC400-13	121(7.46)	400(15.7)		
MBC550-13	170(6.69)	550(21.6)		
MBC800-13	242(9.52)	800(31.5)		
MBC1200-13	369(14.52)	1200(47.2)	16.5(.649)	271Kg (600lbs)
MBC300-16	83(3.26)	300(11.8)		
MBC400-16	121(4.76)	400(15.7)		
MBC550-16	170(6.69)	550(21.6)		
MBC800-16	242(9.52)	800(31.5)		
MBC1200-16	369(14.52)	1200(47.2)	19.5(.748)	316Kg (700lbs)
MBC300-19	83(3.26)	300(11.8)		
MBC400-19	121(4.76)	400(15.7)		
MBC550-19	170(6.69)	550(21.6)		
MBC800-19	242(9.52)	800(31.5)		
MBC1200-19	369(14.52)	1200(47.2)		

● BANDING HEADS



Part No	Used Width	Pkg Q'ty
MBK-6	MB-B-6	100PCS
MBK-13	MB-B-13	100PCS
MBK-16	MB-B-16	100PCS
MBK-19	MB-B-19	100PCS

● BANDINGS



Part No		Length	Width
MB-B-6	RB-B-6	61.0M(200ft)	6.0mm(.24")
MB-B-13	RB-B-13	61.0M(200ft)	13.0mm(.51")
MB-B-16	RB-B-16	61.0M(200ft)	16.0mm(.63")
MB-B-19	RB-B-19	61.0M(200ft)	16.0mm(.63")