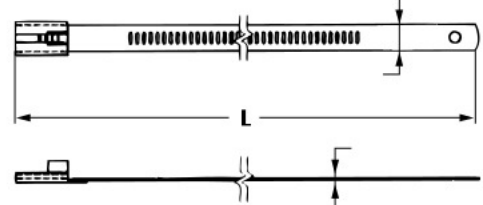


# STAINLESS STEEL TIES

## LOCKING TIES



Locking ties available coated and uncoated  
 self or multiple locking system  
 For single use applications  
 Fire, UV, weather and corrosion resistant ;  
 provides long term, safe and strong cable  
 bundling  
 Coating : EP-E Black  
 Material : 316 or 304 stainless steel  
 Standard pack : 100per bag



NOTE : Dimensions do not include coating thickness for SLTC Series.



### SLT (Uncoated Ties)

Part No	Bundle Dia mm(inch)	L Length mm(inch)	W Width mm(inch)	Min. Loop Tensile LBS.(N)
SLT-152	36(1.4)	152(6)	7(.28)	250(1112)
SLT-229	61(2.4)	229(9)		
SLT-305	85(3.3)	305(12)		
SLT-457	133(5.2)	457(18)		
SLT-610	182(7.1)	610(25)		
SLT-229HD	61(2.4)	229(9)	12(.47)	
SLT-305HD	85(3.3)	305(12)		
SLT-457HD	133(5.2)	457(18)		
SLT-610HD	182(7.1)	610(25)		

### SLTC (Coated Ties)

Part No	Bundle Dia mm(inch)	L Length mm(inch)	W Width mm(inch)	Min. Loop Tensile LBS.(N)
SLTC-152	36(1.4)	152(6)	7(.28)	250(1112)
SLTC-229	61(2.4)	229(9)		
SLTC-305	85(3.3)	305(12)		
SLTC-457	133(5.2)	457(18)		
SLTC-610	182(7.1)	610(25)		
SLTC-229HD	61(2.4)	229(9)	12(.47)	
SLTC-305HD	85(3.3)	305(12)		
SLTC-457HD	133(5.2)	457(18)		
SLTC-610HD	182(7.1)	610(25)		

## Marking Machine

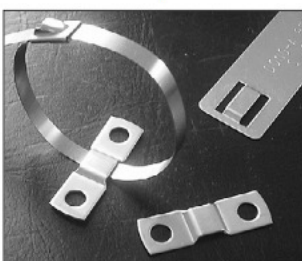


<b>PART NO.</b>
NP-2000

DONG-A NP-2000 provides easy, quick and permanent identification in various environments

<b>Characters Include :</b>			
A B C D E F G H I J K L M N O P Q R S T U V W S Y Z 1 2 3 4 5 6 7 8 9 0 \$ # ? - , .			
Marking wheel size : 1.5, 2.5, 3.0, 4.0, 5.0			
<b>Maximun name plate size</b>		<b>Max, Marking Area</b>	
150	120	140	110 20 High

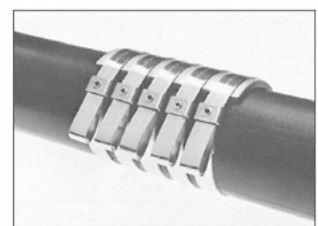
## SSM (Stainless steel Mount)



Material : Stainless Steel  
 304 or 316

Part Number	Mounting Method	PKG Qty.
SSM5	#10 screw	100

## RE-Type



USE with MB or RB Type Banding Rolls.