

TERMINAL LUG - Comply with IEC61238-1

● COPPER CABLES ONLY

Available wire range : IEC standard cables of Metric Cables.
 Color coded on the barrel to eliminate errors during installation and select to easy crimping dies.
 Material : High Conductivity copper per 99.9% up with Electro-Tin Plated.
 Voltage Rating : 35kV



● ONE-HOLE(ROUND TYPE)

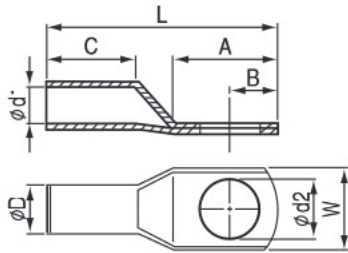


Fig. 1



● ONE-HOLE(SQUARE TYPE)

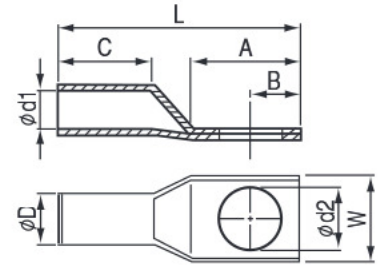


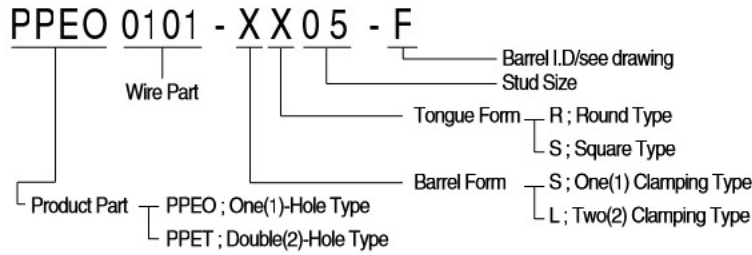
Fig. 2

Wire Range		Part No.	Stud Size	Dimension										Dies Part No.()	Drawing			
CODE	FLEX			W	D	d1	d2	A	B	C		L						
										1-S	2-L	1-S	2-L					
1.5	1.5	PPEO0001.5 -xx03-	3	6.5	3.3	1.8	3.2	8.5	4	6		17		DATT-90 TOOL				
		-xx04-	4				4.3									10.5	5	19
		-xx05-	5				5.3									12.5	6	21
		-xx06-	6				6.4											
2.5	2.5	PPEO0002.5 -xx03-	3	6.5	3.8	2.3	3.2	10	4.5	6		17		DATT-90 TOOL				
		-xx04-	4				4.3									5	19	
		-xx05-	5				5.3									13	6	21
		-xx06-	6				6.4									17	8	25.5
4	4	PPEO0004 -xx04-	4	6.5	4.5	3	4.3	10	4.5	8		19.5		DATT-90 TOOL				
		-xx05-	5				5.3									6	21.5	
		-xx06-	6				6.4									13	6	23.5
		-xx08-	8				8.5									17	8	21.5
6	6	PPEO0006 -xx04-	4	7.5	5.5	3.5	4.3	10	4.5	10		26		DCI3 -0010C				
		-xx05-	5				5.3									5	33	
		-xx06-	6				6.4									14	6.2	39
		-xx08-	8				8.4									20	8.2	45
10	10	PPEO0101 -xx05-	5	9.5	6.6	4.6	5.4	14	6.2	15	21	33	39	DCI3 -0016C				
		-xx06-	6				6.4									10.7	43	
		-xx08-	8				8.4									23	10.7	49
		-xx10-	10				10.5											
16	16	PPEO0102 -xx05-	5	10.5	7.5	5.5	5.4	14	6.2	15	21	33	39	DCI3 -0025C				
		-xx06-	6				6.4									10.7	43	
		-xx08-	8				8.4									20	8.2	45
		-xx10-	10				10.5									23	10.7	49
25	25	PPEO0103 -xx05-	5	13.5	9.5	7.2	5.4	17	7	17	23	40	46	DCI3 -0035C				
		-xx06-	6				6.4									10.7	44	
		-xx08-	8				8.4									23	10.7	50
		-xx10-	10				10.5											
35	35	PPEO0104 -xx05-	5	16	11	8.5	5.4	20	9.3	20	26	46	52	DCI3 -0035F				
		-xx06-F	6				6.4									10.7	50	
		-xx08-F	8				8.4									22	10	54
		-xx10-F	10				10.5											
50	35	PPEO0105 -xx05-	5	18.4	12	9.5	5.4	22	10.7	20	35	50	65	DCI3 -0050C				
		-xx06-	6				6.4									10.7	55	
		-xx08-	8				8.4									25	11	67
		-xx10-	10				10.5											
50	50	PPEO0106 -xx05-	5	19	13.2	10.2	5.4	25	11	20	35	52	67	DCI3 -0070C				
		-xx06-	6				6.4									10.7	55	
		-xx08-	8				8.4									28	13	70
		-xx10-	10				10.5											
70	70	PPEO0107 -xx08-	8	21	14.5	11.2	8.4	25	11	22	35	54	67	DCI3 -0070F				
		-xx10-	10				10.5									28	13	70
		-xx12-	12				13											
		-xx14-	14				15											
70	70	PPEO0108 -xx08-	8	23	16	12.5	8.4	31	14.5	24	40	64	80	DCI3 -0070F				
		-xx10-	10				10.5											
		-xx12-	12				13											
		-xx14-	14				15											

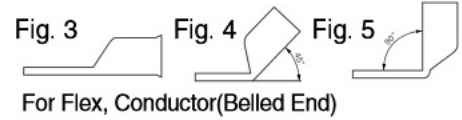
() Dies No : See detail page E44-E45

TERMINAL LUG - Comply with IEC61238-1

● HOW TO ORDER



DNV
Det Norske Veritas



Wire Range		Part No.	Stud Size	Dimension										Dies Part No.()	Drawing
Metric				W	D	d1	d2	A	B	C		L			
CODE	FLEX									1-S	2-L	1-S	2-L		
95		PPEO0109 -xx08-	8	24.5	17	13.3	8.4	31	14.5	29	40	69	80	DCI3 -0095C	
		-xx10-	10				10.5								
		-xx12-	12				13								
		-xx14-	14				15								
		-xx16-	16				17								
95	95	PPEO0109 -xx08-F	8	26	18	14	8.4	30	14	29	37	69	82	DCI3 -0095F	
		-xx10-F	10				10.5								
		-xx12-F	12				13								
		-xx14-F	14				15								
		-xx16-F	16				17								
120		PPEO0110 -xx08-	8	27.5	19	15.2	8.4	31	14.5	29	50	70	90	DCI3 -0120C	
		-xx10-	12				10.5								
		-xx12-	12				13								
		-xx14-	14				15								
		-xx16-	16				17								
150	120	PPEO0111 -xx08-	8	31	21	16.8	8.4	31	14.5	32	50	77	94	DCI3 -0150C -0120F	
		-xx10-	10				10.5								
		-xx12-	12				13								
		-xx14-	14				15								
		-xx16-	16				17								
		PPEO0111 -xx08-F	8	31	22	17.5	8.4	35	16	30	45	80	95		
		-xx10-F	10				10.5								
		-xx12-F	12				13								
		-xx14-F	14				15								
		-xx16-F	16				17								
185	150	PPEO0112 -xx10-	10	34	23.5	18.5	10.5	33	14.5	35	50	83	98	DCI3 -0185C -0150F	
		-xx12-	12				13								
		-xx14-	14				15								
		-xx16-	16				17								
		-xx20-	20				21								
200	185	PPEO0113 -xx10-	10	37.5	25	20	10.5	33	14.5	40	50	88	98	DCI3 -0200C -0185F	
		-xx12-	12				13								
		-xx14-	14				15								
		-xx16-	16				17								
		-xx20-	20				21								
		PPEO0113 -xx10-F	10	37.5	26	20.5	10.5	38	18	40	51	94	105		
		-xx12-F	12				13								
		-xx14-F	14				15								
		-xx16-F	16				17								
		-xx20-F	20				21								
240	240	PPEO0114 -xx10-	10	40.5	28	22	10.5	34	14.5		50		102	DCI3 -0240C DSI3 -0240C	Fig 1 Fig 2
		-xx12-	12				13								
		-xx14-	14				15								
		-xx16-	16				17								
		-xx18-	18				19								
		PPEO0114 -xx10-F	10	40.5	28	22	10.5	46	22				114		
		-xx12-F	12				13								
		-xx14-F	14				15								
		-xx16-F	16				17								
		-xx20-F	20				21								
300		PPEO0115 -xx10-	10	43.5	30.5	24	10.5	36	15		54		110	DCI3 -0300C -0240F DSI3 -0300C	
		-xx12-	12				13								
		-xx14-	14				15								
		-xx16-	16				17								
		-xx20-	20				21								
		PPEO0115 -xx10-F	10	43.5	30.5	24	10.5	48	22				122		
		-xx12-F	12				13								
		-xx14-F	14				15								
		-xx16-F	16				17								
		-xx20-F	20				21								
400		PPEO0116 -xx10-F	10	46	32	25	10.5	48	22		57		125	DCI3 -0300F	
		-xx12-F	12				13								
		-xx14-F	14				15								
		-xx16-F	16				17								
		-xx20-F	20				21								
		PPEO0116 -xx10-F	10	46	32	25	10.5	48	22		57		125		
		-xx12-F	12				13								
		-xx14-F	14				15								
		-xx16-F	16				17								
		-xx20-F	20				21								
400		PPEO0117 -xx12-	12	49	34	26.5	13	36	15		57		127	DCI3 -0400C	
		-xx14-	14				15								
		-xx16-	16				17								
		-xx20-	20				21								
		-xx24-	24				25								
500		PPEO0117 -xx12-	12	56.5	40	30	13	36	15		60		122	DCI3 -500C	
		-xx14-	14				15								
		-xx16-	16				17								
		-xx20-	20				21								
		-xx24-	24				25								
630		PPEO0118 -xx12-	12	64.5	45	35.5	13	48	23		70		150	DCI3 -0630C	
		-xx14-	14				15								
		-xx16-	16				17								
		-xx20-	20				21								
		-xx24-	24				25								

() Dies No : See detail page E44-E45