



Lugs and Connectors

• Copper Connectors	pg. 134	• CIR Series Connectors	pg. 141
• Copper/Aluminum Connectors	pg. 135	• Oil Seal Lugs	pg. 142
• Copper Lugs	pg. 136	• SC Series Stem Connectors	pg. 142
• Copper/Aluminum Lugs	pg. 138	• CP Parallel Clamp	pg. 143
• CI Series Connectors	pg. 140	• 2000T Series Connectors	pg. 144

Scotchlok™ Lugs and Connectors are crimp connectors for power cable conductors. These connectors are used when splicing and terminating power cable.

Scotchlok 10000 and 11000 Series Connectors and 30000 and 31000 Series Lugs

The Scotchlok 10000 and 11000 Series Connectors, and the 30000 and 31000 Series Lugs are used on copper conductors only. They are available in standard or long barrel designs and are constructed of one-piece, seamless high-conductivity copper. (UL 486A Listed).

Scotchlok 20000 Series Connectors and 40000 Series Lugs

The Scotchlok 20000 Series Connectors and 40000 Series Lugs are for use with either copper or aluminum conductors. These aluminum connectors and lugs feature color coded end caps for identification. Contact aid provided in connector and lug barrels is compatible with poly/EPR insulations. (UL 486B Listed).

3M™ CI Series Connectors

3M CI Series Connectors are for splicing applications on aluminum or copper cable conductors. The CI Series aluminum connectors are specially designed for use with 3M QS-I, QS-II and QS-III pre-molded power cable splice bodies. These connectors meet the requirements of ANSI C119.4.

3M SC Series Aerial Stem Connectors

3M SC Series Aerial Stem Connectors feature an aluminum barrel for installations on either copper or aluminum cable conductors and are used when connecting a riser cable to an overhead line. The SC series connectors are also used when terminating an insulated power cable with 3M terminations. The SC series connector is provided with a factory crimped and sealed copper stem for aerial line connection.

3M OS Series Lugs

3M OS Series Lugs are copper lugs that feature a solid oil stop. These lugs are for copper conductors only and are used with 3M 5800-Pb series terminations on paper-insulated lead covered (PILC) cables.

3M CIR Series Connectors

3M CIR Series Connectors are specially designed for use with 3M QS-II Repair Splice Kits. They are aluminum connectors for use on aluminum or copper cable conductors. When used with the appropriate splice kit, these connectors allow up to 6" (152 mm) of damaged cable conductor to be removed, eliminating the need to splice in a new section of cable. CIR series connectors meet the requirements of ANSI C119.4.

Scotchlok 2000T Series

The Scotchlok 2000T series offers three solutions for your copper and/or aluminum connecting needs for PILC power cable. The Scotchlok 2000T-CU Series Connectors are copper inline sleeves that are for use with copper conductor cables of the same size when connecting copper cable to copper cable only. When you need a product that connects copper and aluminum cables use the Scotchlok 2000T-CU/AL Series Connectors. These connectors feature aluminum inline sleeves that can be used with aluminum or copper conductor cables of the same size. For connecting cables of different sizes and types, the Scotchlok 2000T Reducer Series is your answer. They are aluminum inline sleeves that are applicable for both aluminum and copper conductors, and because the barrel diameters at the connector ends are different, it allows connecting conductors of different size. All connectors in the 2000T series feature a solid center oil stop.

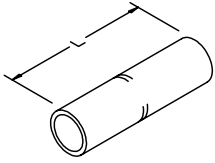


Features — Advantages — Benefits

Scotchlok Lugs and Connectors

Simple installation using readily available tools	Standard crimping tools	UL Listed for use with a variety of manufacturers' tools
Entrance chamfers	Guide cable into crimp area	Facilitate cable insertion

Specifications and Ordering Information for Scotchlok™ 10000 Series Copper Connectors- Standard-Barrel up to 35 kV



Product Number	UPC (054007-)	Color Wire Code	Size	Dimensions		Minimum Order L	Case Qty.
				I.D.	O.D.		
10001	12717	Blue	6 AWG	0.196" (5,0 mm)	0.290" (7,3 mm)	1.750" (44,4 mm)	50 each
10002	12725	Gray	4 AWG	0.247" (6,2 mm)	0.340" (8,6 mm)	1.750" (44,4 mm)	50 each
10003	12733	Brown	2 AWG	0.307" (7,8 mm)	0.416" (10,6 mm)	1.880" (47,6 mm)	25 each
10004	12758	Green	1 AWG	0.358" (9,1 mm)	0.462" (11,7 mm)	1.880" (47,6 mm)	10 each
10005	12766	Pink	1/0 AWG	0.394" (10,0 mm)	0.512" (13,0 mm)	1.880" (47,6 mm)	10 each
10006	12774	Black	2/0 AWG	0.439" (11,2 mm)	0.560" (14,2 mm)	2.000" (50,8 mm)	10 each
10007	12790	Orange	3/0 AWG	0.490" (12,4 mm)	0.617" (15,7 mm)	2.130" (54,0 mm)	10 each
10008	12816	Purple	4/0 AWG	0.548" (13,9 mm)	0.687" (17,4 mm)	2.130" (54,0 mm)	10 each
10009	12832	Yellow	250 kcmil	0.595" (15,1 mm)	0.750" (19,1 mm)	2.250" (57,2 mm)	3 each
10010	12857	White	300 kcmil	0.650" (16,5 mm)	0.813" (20,7 mm)	2.250" (57,2 mm)	3 each
10011	12873	Red	350 kcmil	0.700" (17,8 mm)	0.875" (22,2 mm)	2.380" (60,4 mm)	3 each
10014	12899	Brown	500 kcmil	0.836" (21,2 mm)	1.060" (27,0 mm)	2.880" (73,0 mm)	3 each
10019	12915	—	750 kcmil	1.031" (26,2 mm)	1.299" (33,0 mm)	3.380" (85,8 mm)	3 each
10024	12931	—	1000 kcmil	1.173" (29,8 mm)	1.500" (38,1 mm)	3.880" (98,4 mm)	3 each

Specifications and Ordering Information for Scotchlok 11000 Series Copper Connectors- Long-Barrel up to 35 kV



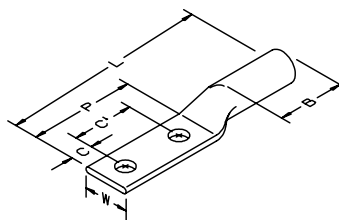
Product Number	UPC (054007-)	Color Code	Wire Size	Dimensions		Minimum Order L	Case Qty.
				I.D.	O.D.		
11006	12782	Black	2/0 AWG	0.439" (11,2 mm)	0.560" (14,2 mm)	3.130" (79,4 mm)	10 each
11007	12808	Orange	3/0 AWG	0.490" (12,4 mm)	0.617" (15,7 mm)	3.130" (79,4 mm)	10 each
11008	12824	Purple	4/0 AWG	0.548" (13,9 mm)	0.687" (17,4 mm)	3.380" (85,8 mm)	10 each
11009	12840	Yellow	250 kcmil	0.595" (15,1 mm)	0.750" (19,1 mm)	3.380" (85,8 mm)	3 each
11010	12865	White	300 kcmil	0.650" (16,5 mm)	0.813" (20,7 mm)	4.130" (104,8 mm)	3 each
11011	12881	Red	350 kcmil	0.700" (17,8 mm)	0.875" (22,2 mm)	4.130" (104,8 mm)	3 each
11014	12907	Brown	500 kcmil	0.836" (21,2 mm)	1.060" (27,0 mm)	4.630" (117,5 mm)	3 each
11019	12923	—	750 kcmil	1.031" (26,2 mm)	1.299" (33,0 mm)	5.880" (149,2 mm)	3 each
11024	12949	—	1000 kcmil	1.173" (29,8 mm)	1.500" (38,1 mm)	6.130" (155,6 mm)	3 each

Specifications and Ordering Information for Scotchlok™ 31000 Series Copper Lugs- One Hole, Long-Barrel up to 35 kV



Product Number	UPC (054007-)	Color Code	Standard Wire Size	Stud Size	Dimensions						Minimum Order Case Qty.
					I.D.	L	B	W	P	C	
31036	12550	Black	2/0 AWG	3/8" (10 mm)	0.439" (10 mm)	2.840" (11,2 mm)	1.440" (72,2 mm)	0.812" (36,5 mm)	0.890" (20,6 mm)	0.375" (22,6 mm)	10 each
31041	12576	Orange	3/0 AWG	1/2" (12 mm)	0.490" (12,4 mm)	3.130" (79,5 mm)	1.440" (36,5 mm)	0.910" (23,0 mm)	1.110" (28,2 mm)	0.531" (13,5 mm)	10 each
31045	12592	Purple	4/0 AWG	1/2" (12 mm)	0.548" (13,9 mm)	3.320" (84,4 mm)	1.560" (39,7 mm)	1.000" (25,4 mm)	1.110" (28,2 mm)	0.531" (13,5 mm)	10 each
31049	12618	Yellow	250 kcmil	1/2" (12 mm)	0.590" (15,1 mm)	3.380" (85,8 mm)	1.500" (38,0 mm)	1.130" (28,6 mm)	1.110" (28,2 mm)	0.531" (13,5 mm)	10 each
31053	12634	White	300 kcmil (150 mm²)	1/2" (12 mm)	0.650" (16,5 mm)	3.780" (96,0 mm)	1.940" (49,2 mm)	1.220" (30,9 mm)	1.110" (28,2 mm)	0.531" (13,5 mm)	10 each
31056	12659	Red	350 kcmil	1/2" (12 mm)	0.700" (17,8 mm)	3.840" (97,5 mm)	1.940" (49,2 mm)	1.270" (32,3 mm)	1.110" (28,2 mm)	0.531" (13,5 mm)	10 each
31060	11978	Blue	400 kcmil	1/2" (12 mm)	0.762" (19,3 mm)	4.160" (105,7 mm)	2.000" (50,8 mm)	1.410" (35,8 mm)	1.340" (34,2 mm)	0.650" (16,66 mm)	10 each
31066	12675	Brown	500 kcmil	1/2" (12 mm)	0.836" (21,2 mm)	4.500" (114,3 mm)	2.190" (55,6 mm)	1.530" (38,9 mm)	1.340" (34,2 mm)	0.660" (16,8 mm)	10 each
31067	12683	Brown	500 kcmil	5/8" (16 mm)	0.836" (21,2 mm)	4.500" (114,3 mm)	2.190" (55,6 mm)	1.530" (38,9 mm)	1.340" (34,2 mm)	0.660" (16,8 mm)	10 each
31068	11980	Green	600 kcmil	1/2" (12 mm)	0.920" (23,4 mm)	5.120" (130,0 mm)	2.690" (68,2 mm)	1.690" (42,9 mm)	1.750" (44,4 mm)	0.870" (22,2 mm)	6 each

Specifications and Ordering Information for Scotchlok 31000 Series Copper Lugs-Two Hole, Long-Barrel up to 35 kV



Product Number	UPC (054007-)	Color Code	Wire Size	Stud Size	Dimensions							Min. Order Case Qty.
					I.D.	L	B	W	P	C	C1	
31145	12600	Purple	4/0 AWG	1/2" (12 mm)	0.548" (13,9 mm)	5.160" (131,0 mm)	1.560" (44,4 mm)	1.000" (39,7 mm)	3.000" (25,4 mm)	0.630" (76,2 mm)	1.750" (15,9 mm)	10 each
31149	12626	Yellow	250 kcmil	1/2" (12 mm)	0.595" (15,1 mm)	5.310" (134,9 mm)	1.560" (39,7 mm)	1.130" (28,6 mm)	3.000" (76,2 mm)	0.630" (15,9 mm)	1.750" (44,4 mm)	10 each
31153	12642	White	300 kcmil (150 mm²)	1/2" (12 mm)	0.650" (16,5 mm)	5.750" (146,0 mm)	1.940" (49,2 mm)	1.220" (31,0 mm)	3.000" (76,2 mm)	0.630" (15,9 mm)	1.750" (44,4 mm)	10 each
31156	12667	Red	350 kcmil	1/2" (12 mm)	0.700" (17,8 mm)	5.750" (146,0 mm)	1.940" (49,2 mm)	1.310" (33,4 mm)	3.000" (76,2 mm)	0.630" (15,9 mm)	1.750" (44,4 mm)	10 each
31160	11979	Blue	400 kcmil	1/2" (12 mm)	0.762" (19,35 mm)	6.000" (152,4 mm)	2.120" (59,8 mm)	1.410" (35,8 mm)	3.090" (78,5 mm)	0.620" (15,7 mm)	1.750" (44,4 mm)	10 each
31166	12691	Brown	500 kcmil	1/2" (12 mm)	0.836" (21,2 mm)	6.160" (156,4 mm)	2.190" (55,6 mm)	1.530" (38,9 mm)	3.000" (76,2 mm)	0.630" (15,9 mm)	1.750" (44,4 mm)	10 each
31168	11981	Green	600 kcmil	1/2" (12 mm)	0.923" (23,44 mm)	6.720" (170,6 mm)	2.620" (66,5 mm)	1.690" (42,9 mm)	3.120" (79,2 mm)	0.620" (15,7 mm)	1.750" (44,4 mm)	6 each
31172	12709	Black	750 kcmil	1/2" (12 mm)	1.031" (26,2 mm)	7.000" (177,8 mm)	2.810" (71,5 mm)	1.720" (43,7 mm)	3.000" (76,2 mm)	0.630" (15,9 mm)	1.750" (44,4 mm)	6 each
31178	00907	—	1000 kcmil (500 mm²)	1/2" (12 mm)	1.173" (29,3 mm)	7.280" (184,9 mm)	2.940" (74,6 mm)	1.720" (43,7 mm)	3.000" (76,2 mm)	0.630" (15,9 mm)	1.750" (44,4 mm)	6 each